

DIVUS DASHBOARD



DIVUS DASHBOARD

Version: 1.0.20

REV: 01-20200526

GENERAL INFORMATION

DIVUS GmbH Pillhof
511-39057
Eppan (BZ)

Operating instructions, manuals and software are protected by copyright. All rights reserved. Copying, duplicating, translating, translating in whole or in part is not permitted. An exception applies to the creation of a backup copy of the software for personal use.

The manual is subject to change without notice. We cannot guarantee that the data contained in this document and on the storage media supplied are free of errors and correct. Suggestions for improvements as well as hints on errors are always welcome. The agreements also apply to the specific annexes to this manual.

The designations in this document may be trademarks whose use by third parties for their own purposes may infringe the rights of their owners.

User instructions: Please read this manual before using it for the first time and keep it in a safe place for future reference.

Target group: The manual is written for users with previous knowledge of PC and automation technology.

PRESENTATION CONVENTIONS




[KEY]	Keystrokes of the user are shown in square brackets, e.g. [CTRL] or [DEL].
COURIER	Screen output is described in the Courier font, e.g. C:\>
COURIER FAT	Keyboard input by the user is described in Courier font bold, e.g. C:\> DIR
"..."	Names of buttons, menus or other screen elements to be selected are displayed in "inverted commas".
PICTOGRAMS	The following pictograms are used in the manual to identify certain sections of text:
	Warning Possibly dangerous situation. Damage to property can be the result.
	Notes Tips and supplementary information
	New Marks changes and new features

TABLE OF CONTENTS

1	GENERAL INFORMATION	4
1.1	INTRODUCTORY REMARKS	4
2	FUNCTIONAL SCOPE	5
2.1	USER INTERFACE	5
3	SETTINGS	6
3.1	INTRODUCTORY REMARKS	6
3.2	NAVIGATION	6
3.2.1	CREATE/EDIT A NAVIGATION POINT	7
3.2.2	POSITIONING AND SIZE OF THE APPLICATION TO BE OPENED	8
3.3	DESIGN	9
3.4	TOOLBOX	10
3.5	GENERAL INFORMATION	11
3.5.1	UDP CONTROL	12
3.6	LICENSE	13
3.7	INFO	14
3.8	NOTES	15

1 General Information

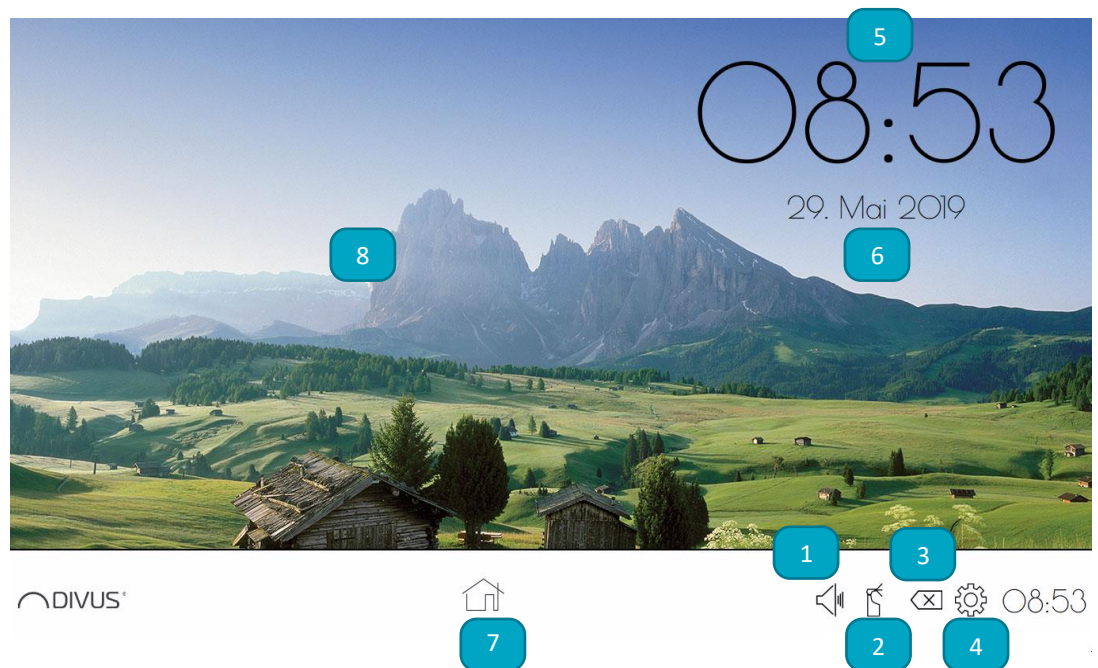
1.1 INTRODUCTORY REMARKS

The DIVUS DASHBOARD launcher app completes the DIVUS Windows panels by providing access to other functions and settings of the device while still hiding the desktop and the entire operating system. You can open other apps or web URLs from the main view. This results in a simple and intuitive use of the device. The entire appearance can be graphically adapted individually to the given requirements.

2 Functional scope

2.1 USER INTERFACE

The following picture shows the user interface of DIVUS DASHBOARD. A detailed description of the individual control elements follows:



- 1) Volume control: You can change the volume with a slider
- 2) Cleaning mode: One click takes you to the cleaning mode where the screen does not react to any inputs for an adjustable time and can be cleaned.
- 3) Exit: Click to exit DIVUS DASHBOARD. A password can be set in the settings as explained later.
- 4) Settings: A click takes you to the configuration menu.
- 5) Time: Displays the time, if configured.
- 6) Date: Displays the date, if configured.
- 7) Navigation bar: The configured links are displayed here.
- 8) Background: The background image that can be personalized is displayed here.

3 Settings

3.1 INTRODUCTORY REMARKS

The settings can be opened by clicking on the gear symbol in the lower right area of the DIVUS DASHBOARD user interface. The configuration menu contains 5 submenus which are described below. With the "CLOSE" button you return to the user interface.

i Note: All changes made in the settings menu are not saved until you press the "SAVE" button; if you close the application with the "CLOSE" button only, all changes will be lost.

3.2 NAVIGATION

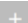
Here the navigation entries can be created and managed:

The screenshot shows the 'Settings' window with the 'Navigation' tab selected. The window title is 'DIVUS DASHBOARD'. The 'Settings' menu is open, showing submenus: Navigation, Design, Toolbox, General, License, and Info. The 'Navigation' submenu is active, displaying 'Button Configuration' and 'Add Button' (10). The 'Button Configuration' section includes fields for 'Button name' (1), 'Password' (2), 'Choose Picture' (3), 'Foreground App' (6), 'Sec Auto Switch' (7), 'Auto Hide Navi' (4), 'App' (8), 'Choose Application' (8), 'Configuration' (9), and 'Network' (5). Below this is a table with columns: Pos, Name, Code, Pic., App, and icons. The table contains four rows of data. At the bottom, there are 'Close' and 'Save' buttons, and a keyboard icon (18). Numbered callouts (1-18) are placed over various UI elements.

Pos	Name	Code	Pic.	App	Icons
0		13	Home icon		Trash, Gear, Checkmark
1		1589	Music icon		Trash, Gear, Up arrow, Checkmark
2	Home		14		Trash, Gear, Up arrow, Checkmark
3				C:/Program Files (x86)/DIVUS DASHBOARD/DIVUS...	Trash, Gear, Up arrow

- 1) Name: Enter the name of the navigation point which will be displayed in the taskbar.
- 2) Password: It is defined whether you want to have a password request when opening the navigation point.
- 3) Select image: Select an icon for the navigation point in the taskbar.
- 4) Auto-Hide Navi: If this option is active, the taskbar is hidden when the navigation point is opened.
- 5) Network: Here you can configure the UDP commands to be sent when the navigation point is opened.
- 6) foreground app: If active, the app is opened in the foreground.
- 7) Sec-Auto-Switch: defines for how many seconds the application remains in the foreground
- 8) Select application: Here you can select the application to be opened when clicking on the navigation point.
- 9) Configuration: Size and position of the selected application are defined here.
- 10) Add: add a new navigation point
- 11) Pos: Position of the applications in the navigation bar
- 12) Name: Display Name of the configured application
- 13) Code: Display Password of the configured application
- 14) Pic. (picture): Displays the icon chosen for the current application
- 15) Application: Displays the path of the configured application.
- 16) Garbage can: Deletes the selected application.
- 17) Gear: Opens the edit mode of the selected application.
- 18) Arrows: Changes the order of the applications in the taskbar.

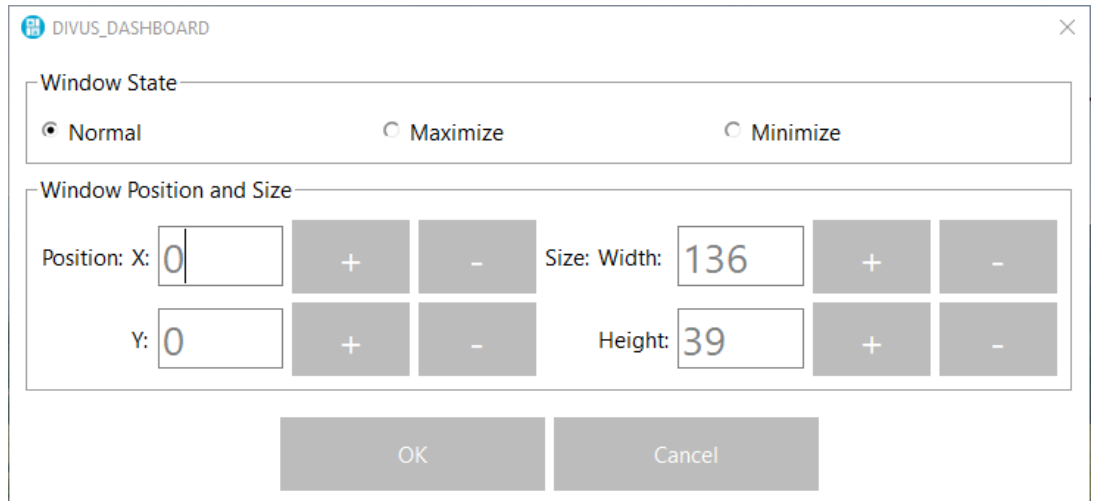
3.2.1 CREATE/EDIT A NAVIGATION POINT

Open the tab "Navigation" in the configuration menu and enter all desired settings under "Configuration". Then press the Add button 

As soon as you have created/edited your navigation points, click on Save and then on Close. Now the previously created navigation points are displayed in your taskbar and you are ready to go.

3.2.2 POSITIONING AND SIZE OF THE APPLICATION TO BE OPENED

A click on the configuration button opens this window:



The screenshot shows a configuration window titled "DIVUS_DASHBOARD" with a close button (X) in the top right corner. The window is divided into two main sections:

- Window State:** This section contains three radio buttons: "Normal" (which is selected), "Maximize", and "Minimize".
- Window Position and Size:** This section contains input fields and adjustment buttons for position and size:
 - Position:** X and Y coordinates are both set to "0". Each coordinate has a "+" button to the right and a "-" button to the left.
 - Size:** Width is set to "136" and Height is set to "39". Each size value has a "+" button to the right and a "-" button to the left.

At the bottom of the window, there are two buttons: "OK" and "Cancel".

In this window the size and the position can be defined. If e.g. x: 0 and y: 0 the window will be opened in the upper left corner. The window status determines how the program is started. Normal, Maximized or Minimized are available for this purpose. The height and width of the window can also be adjusted. These settings are displayed in real time when the program window is open. As soon as all settings have been made, confirm with Ok and save again to overwrite the old settings. If you now open the navigation point, your program opens in the position and size set before.

DIVUS DASHBOARD

Settings

Navigation
Design
Toolbox
General
License
Info

Theme Icon

Background Select Picture

Reset Background

Button Size ▲ ▼

Button Space ▲ ▼

Font Size ▲ ▼

Bar Height ▲ ▼

Close
Save
⌨

3.3 DESIGN


- Theme: Here you can set whether a text or a symbol is displayed in the navigation menu for the individual application.
- Background: You can choose between different colours or a personalized image. If you want to return to the default background, click on "Reset background".
- Size buttons: Change the size of the navigation points here.
- Font size: When using the "Text" theme, the font size of the name in the navigation point can be changed here.
- Distance buttons: Here you can set the distance between the navigation points.
- Height of ledge: Height of the taskbar in the dashboard.

DIVUS DASHBOARD

Settings
Navigation
Design
Toolbox
General
License
Info

Exit	<input checked="" type="checkbox"/>	Password	<input type="text"/>	Reboot	<input type="checkbox"/>
Keyboard	<input checked="" type="checkbox"/>				
Clean mode	<input checked="" type="checkbox"/>	Block Sec.	<input type="text" value="3600"/>		
Volume	<input checked="" type="checkbox"/>				
Settings Password	<input type="checkbox"/>	Password	<input type="text"/>		

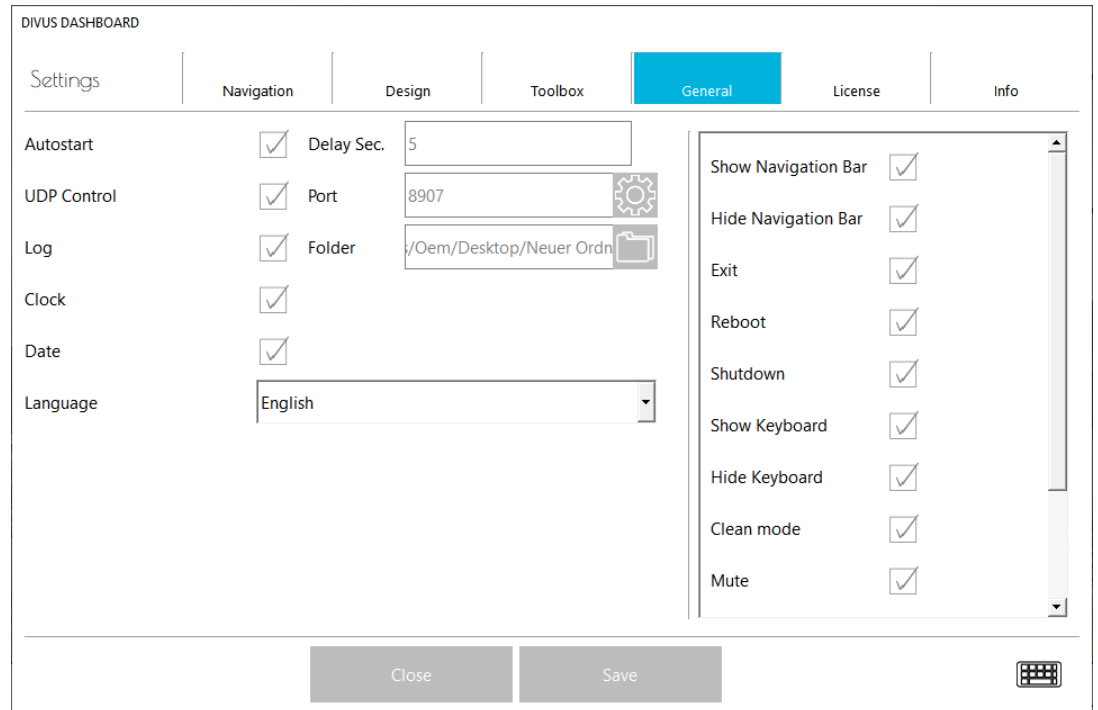
Close
Save



3.4 TOOLBOX

- **Exit:** The "Exit" button can be activated or deactivated here. You can also set a password for the DASHBOARD and also whether the DASHBOARD should restart the computer after the exit.
- **Keyboard:** The on-screen keyboard can be activated or deactivated here. If this is activated, a keyboard symbol is displayed in the taskbar of the DASHBOARD to open the keyboard.
- **Cleaning mode:** Here you can activate or deactivate the cleaning mode and set its duration in seconds.
- **Volume:** Enables or disables the volume control display in the DASHBOARD.
- **Password settings:** Password to open the settings.

3.5 GENERAL INFORMATION



- **Autostart:** This can be used to set whether the DIVUS DASHBOARD should start automatically each time the computer is started. In addition, a delay in seconds can be set.
- **UDP control:** The DIVUS DASHBOARD can be enabled for a predefined selection of UDP commands. These can be activated individually via the gearwheel.
- **Log:** DIVUS DASHBOARD has a log function in which, among other things, the received or sent UDP commands and other useful information are stored. If activated, a separate folder can be selected for the logs if required. If no folder is selected, the logs are stored in the default directory, which is located in the installation folder of the DIVUS DASHBOARD.
- **Time and date:** Activate the date and time display here.
- **Language:** Select the language of the DIVUS DASHBOARD, save and close the settings window. After reopening, the selected language will be active.

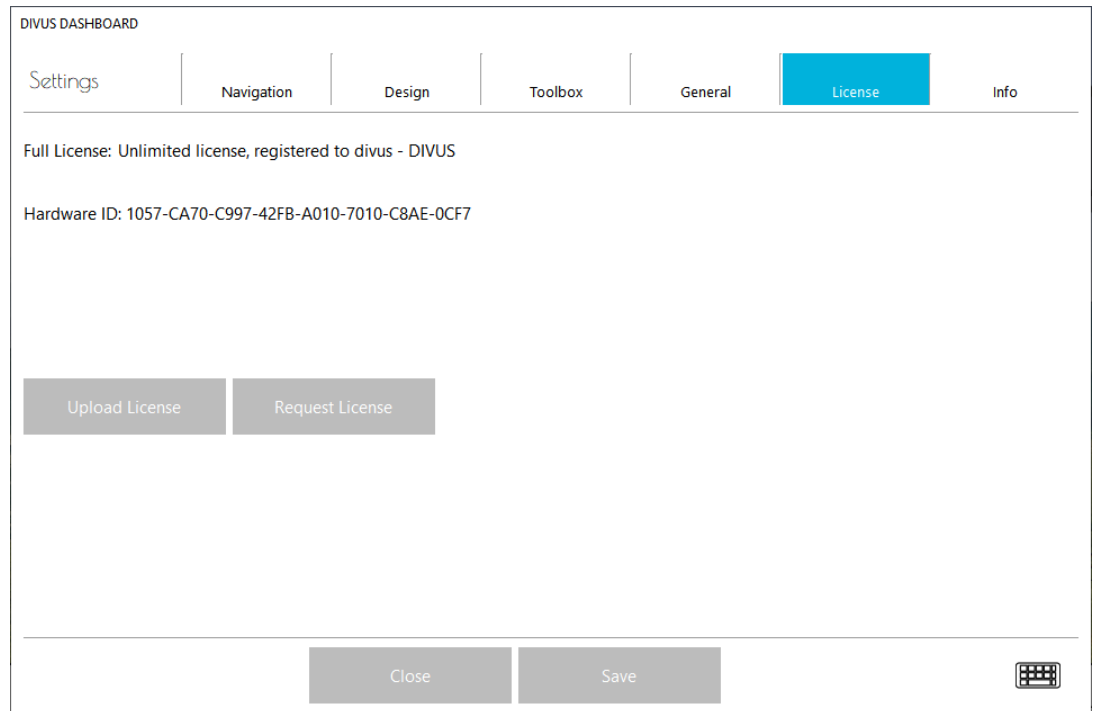
3.5.1 UDP CONTROL

These are the available UDP commands and the corresponding description:

Description	Command
Show navigation bar	CMD=SHOWNAVBAR
Hide Navigation Bar	CMD=HIDENAVBAR
exit	CMD=EXIT
restart	CMD=REBOOT
shutdown	CMD=SHUTDOWN
Show Keyboard	CMD=KEYBOARDSHOW
Hide Keyboard	CMD=KEYBOARDHIDE
cleaning mode	CMD=STARTCLEANMODE
Mute On	CMD=VOLMUTE
Mute Off	CMD=VOLUNMUTE
volume	CMD=SETVOLUME:X.Y
Play Sound	CMD=PLAYSOUND:<directory of the sound file>
Display On	CMD=DISPLAYON
Display Off	CMD=DISPLAYOFF

3.6 LICENSE


DIVUS DASHBOARD is licensed for the Windows touch panels of DIVUS.



3.7 INFO

DIVUS DASHBOARD

Settings | Navigation | Design | Toolbox | General | License | **Info**



DIVUS DASHBOARD

Windows Connectivity

Version: 1.0.20
© 2018 DIVUS

DIVUS GmbH
Pillhof 51
I-39057 Eppan (BZ) Italy
www.divus.eu

Mail: support@divus.eu
Phone: +39 0471 633662

Based on [Qt Framework 5.12.1](#) licensed under [LGPLv3](#). For any further information contact support@divus.eu

Here you will find all relevant information about the application:

- Name of the application
- Detailed version number
- Copyright
- DIVUS Location data
- DIVUS Homepage
- Support contact details (mail, phone number)

