



**GERMAN
DESIGN
AWARD
SPECIAL
2017**



DIVUS TOUCHZONE

The Synergy Touch

USER MANUAL - ENGLISCH

TZ07 - TZ10 - TZ15 - TZ19

VER.3

GENERAL INFORMATION

DIVUS GmbH
Pillhof 51
I-39057 Eppan (BZ)

Operating instructions, manuals and software are protected by copyright. All rights are reserved. Copying, multiplication, translation and conversion, either partially or as a whole, is not permitted. You are allowed to make a single copy for backup purposes.

We reserve the right to make changes to the manual without prior notification.

We assume no responsibility for any errors or omissions that may appear in this document.

We do not assume liability for the flawlessness and correctness of the programs and data contained on the delivered discs.

You are always welcome to inform us of errors or make suggestions for improving the program.

The present agreement also applies to special appendices to the manual.

This manual can contain terms and descriptions, which improper use by third can harm the copyrights of the author.

Please read the manual before beginning and keep the manual for later use.

The manual has been conceived and written for users who are experienced in the use of PCs and automation technology.




Our General Terms and Conditions apply, which can be downloaded here:

<https://www.divus.eu/en/general-conditions>

This version of the manual is based on the following version(s):

- TOUCHZONE image R4.14
- DIVUS LAUNCHER 2 v. 1.0.1 rev. 65
- DIVUS VIDEOPHONE 4 v. 4.2.4 rev. 152
- DIVUS OPTIMA v. 1.2.1 rev. 1494
- DIVUS KIBRO v. 1.4 rev. 1429
- DIVUS MÜLLPLANER v. 1.0 rev. 9
- DIVUS IP CAM VIEWER v. 1.1 rev. 26
- DIVUS HEARTBEAT v. 1.0 rev. 6
- DIVUS SCREENCLEANER v. 2.0 rev. 12

CONVENTIONS

[KEYS]	Keys that are to be pressed by the user are given in square brackets, e.g. [CTRL] or [DEL]
COURIER	On-screen messages are given in the Courier font, e.g. c:\>
COURIER BOLD	Keyboard input to be made by the user are given in Courier bold, e.g. c:\>DIR .
"..."	Names of buttons to be pressed, menus or other onscreen elements and product names are given within double quotes. (e.g. "Configuration").
PICTOGRAMS	In this manual the following symbolic are used to indicate particular text blocs.
	Caution! A dangerous situation may arise that may cause damage to material.
	Hint Hints and additional notes
	New New features

The terms "DIVUS TOUCHZONE" and "DIVUS TZ" or simply "TZ" all point out the same product.

SAFETY INSTRUCTIONS

The present operating instructions contain those safety instructions that are required to safely operate the machine.

All persons working with the machine must heed the present operating instructions, especially the safety instructions.

In addition, all local stipulations governing the prevention of accidents must be heeded.

Only trained and authorized personnel may **INSTALL AND OPERATE** the machine.

PROPER APPLICATION: The machine has been designed for application inside the building automation and must not be used to control security functions.

The machine has been built using state-of-the-art technology and all applicable safety regulations. However, damage or negative effects to the machine or other material cannot be excluded if the machine is operated.

The machine meets the requirements of the EMC guidelines and of the harmonized European standards. Modifications to the machine hardware may affect the system's EMC compatibility.

Without special protection measures, the machine must not be used in EX areas and in plants that require special monitoring.

Danger of explosion. Do not expose the buffer batteries to heat. Serious injury may be the result.

The operating voltage of the machine must be within the specified range! The product label provides the required information.

The device is designed to be mounted at most 2m above the ground.

STANDARDS

The DIVUS TOUCHZONE meets the following guidelines and standards:

Low Voltage Directive 2014/35/EU (ex 73/23/CEE – 93/68/CEE – 06/95/CE)

Standard to which conformity is declared:

EN 50491-3:2009, EN 60950-1:2006+A11:2009+A1:2010+A12:2011 Safety

EMC Directive 2014/30/EU (ex 89/336/CEE – 92/31/CEE – 93/68/CEE – 04/108/CE)

Standard(s) to which conformity is declared:

EN 50491-5-1:2010, EN 50491-5-2:2010 Conducted & Radiated Emissions

RoHS2 Directive 2011/65/EU (ex 02/95/EC)

Standard(s) to which conformity is declared:

EN 50581:2012 Restriction of hazardous substances

The installation and wiring instructions contained in this documentation must be heeded. Conformity is indicated by the attached CE label.

The EC conformity statements can be obtained from:

DIVUS GmbH
Pillhof 51
I-39057 Eppan (BZ)



Regarding Directive 2012/19/EU (ex 2002/96/EC) waste electrical and electronic equipment has to be collected separately and is not allowed to dispose as unsorted municipal waste.

INDEX

1	PRODUCT DESCRIPTION	9
1.1	FRONT VIEW	9
1.2	FRONT CONNECTIONS	10
1.2.1	SENSORS	11
1.3	REAR CONNECTIONS	12
1.3.1	DIO (DIGITAL INPUT/OUTPUT)	13
1.3.2	DC IN	15
1.4	PRODUCT CONTENTS	16
2	COMMISSIONING	17
2.1	GROUNDING	17
2.2	COMMISSIONING	17
2.3	INSTALLATION	18
2.3.1	INSTALLING WALL MOUNT BOX	18
2.3.2	INSTALLING TZ	18
3	OPERATING SYSTEM	19
3.1	FEATURES	21
3.2	HARDWARE INTERFACES	21
4	DIVUS APPS	23
4.1	DIVUS LAUNCHER 2	23
4.2	DIVUS VIDEOPHONE 4	24
4.3	DIVUS OPTIMA	25
4.4	DIVUS KIBRO	26
4.5	DIVUS MÜLLPLANER	27
4.6	DIVUS IP CAM VIEWER	28
4.7	DIVUS HEARTBEAT	29

4.8	DIVUS SCREENCLEANER	30
4.9	DIVUS SYNCHRONIZER	31
4.10	TEAMVIEWER QUICKSUPPORT	32
4.11	SYSTEM UPDATE	33
5	TECHNICAL DATA	34
5.1	MECHANICAL DATA	34
5.2	DIVUS TOUCHZONE DATA OVERVIEW	35
5.3	DIVUS TOUCHZONE WALL MOUNT BOX	36
5.4	MAINTENANCE AND UPKEEP	41
6	APPENDIX	42
6.1	RECYCLING INFORMATION	42

1 Product description

DIVUS TOUCHZONE is a high-quality glass multi-touch panel for building automation, ideal for both residential and commercial applications. It can be used for a wide range of applications, including but not limited to:

- Home automation system
- Security and surveillance
- Interior intercom station
- Audio/video control panel
- Internet navigation

DIVUS TOUCHZONE is the elegant product innovation *made in Italy*.

1.1 FRONT VIEW



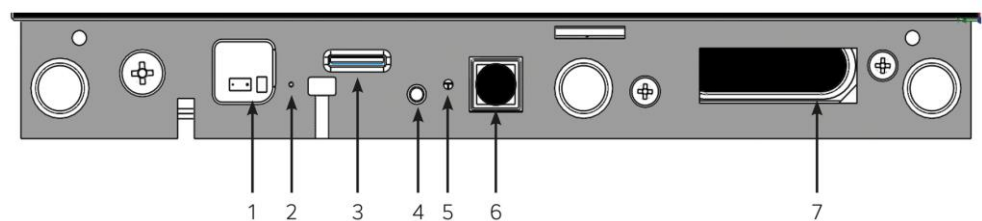
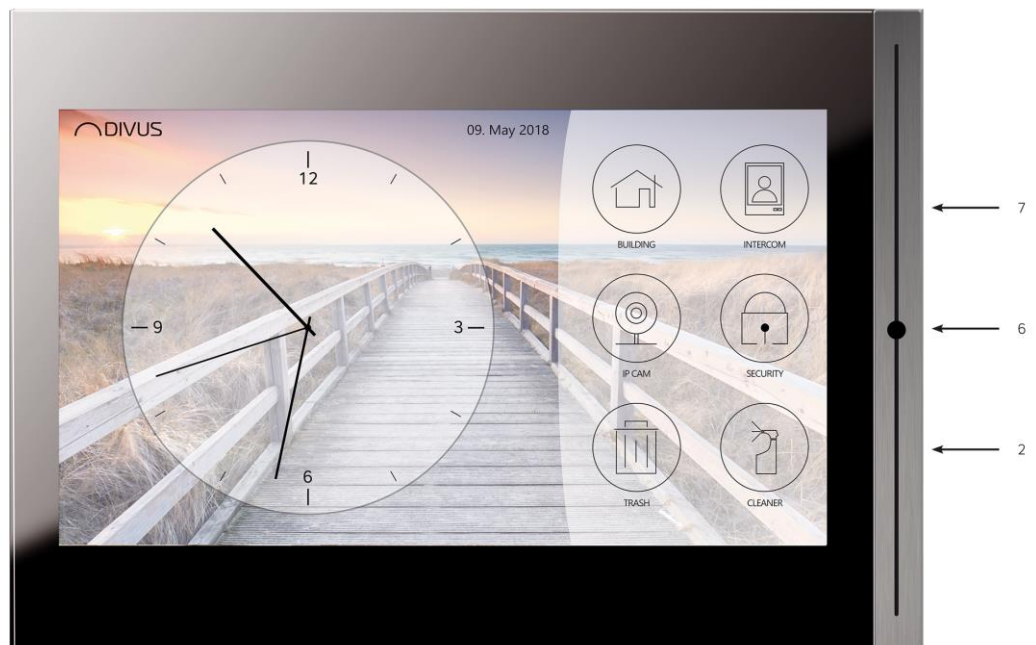
In foreground: TZ07 in portrait – in background: TZ15 in landscape.

DIVUS TOUCHZONE is available in various sizes and colors, as a comparison from left to right: TZ07 portrait, TZ10 landscape, TZ15 landscape and TZ19 landscape



1.2 FRONT CONNECTIONS

During normal operation the physical HOME button in the center of the design frame is the only visible interface, however there are additional connections hidden below the frame.



- 1) Proximity/brightness sensor
- 2) Microphone
- 3) Micro SDHC card slot
- 4) POWER button
- 5) RGB led
- 6) HOME button
- 7) Speaker



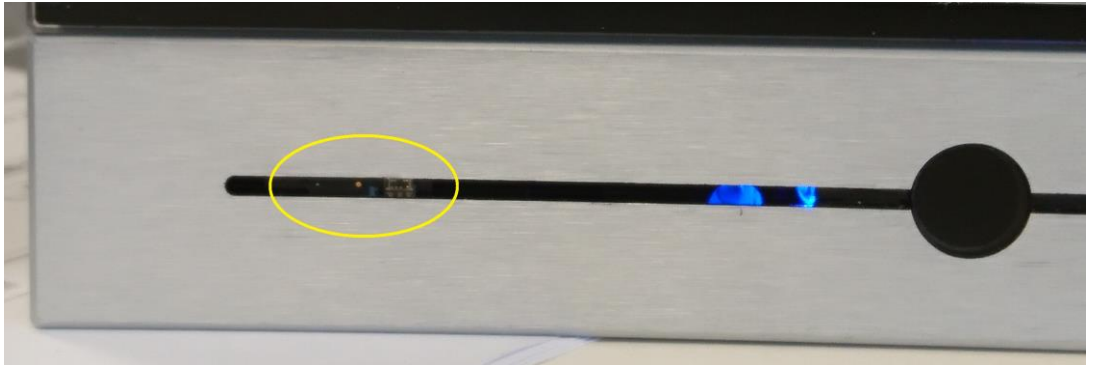
The present connections may vary depending on your model!



Proximity/brightness sensor is not present on all devices!

1.2.1 SENSORS

The proximity and brightness sensors are on the front of the device below the frame. Before using these sensors make sure that the frame is correctly installed. The brown sensor dots need to be aligned with the left side slit of the frame. The below picture shows a correctly mounted frame and highlights the brown sensor dots.



Proximity/brightness sensor is not present on all devices! For additional information contact our technical support or internal sales.

1.3 REAR CONNECTIONS

DIVUS TOUCHZONE offers additional connections on the rear of the device, as can be seen in the following image:



Rear Connections:

- DC in
(12-36 VDC)
- LAN – PoE+
Cat5e/Cat6 UTP cable
max. 100m IEEE 802.3at
- Digital input/output
- USB1
- USB2
- USB OTG



Only TZ07, TZ10 and TZ15 support PoE+. TZ19 must be powered with DC in.

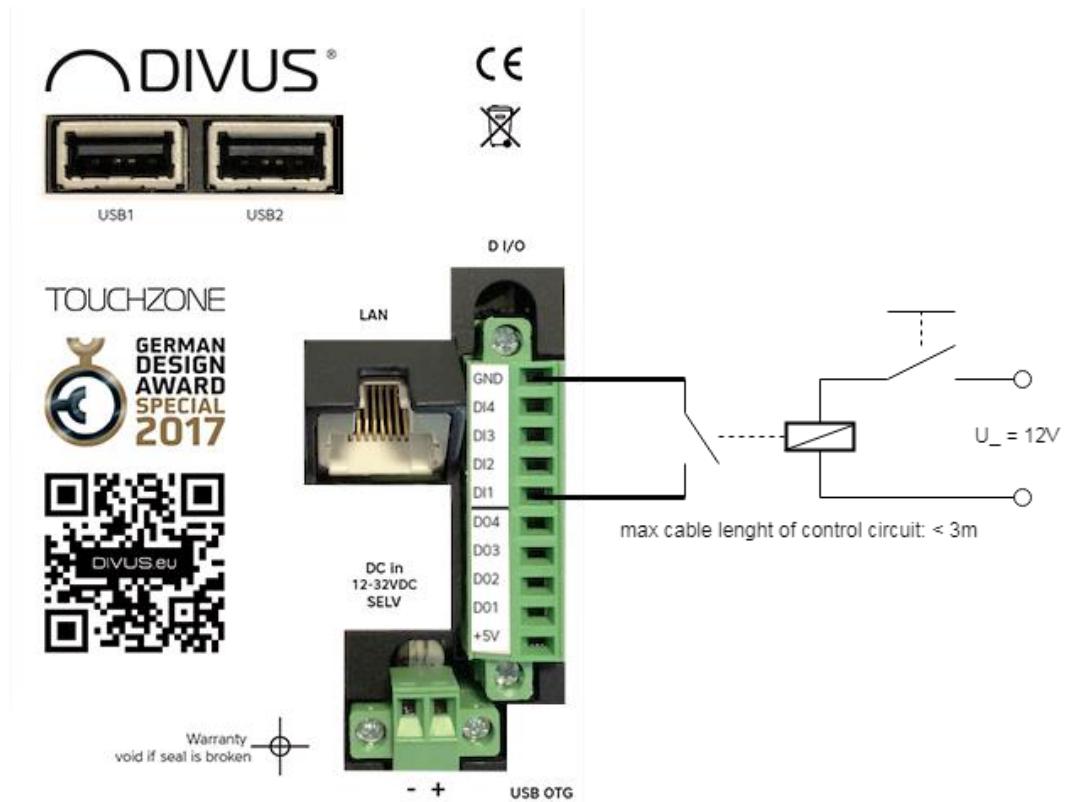


Though TZ07, TZ10 and TZ15 support hybrid power supply by PoE+ and DC in at the same time, only one power input should be used at a time.

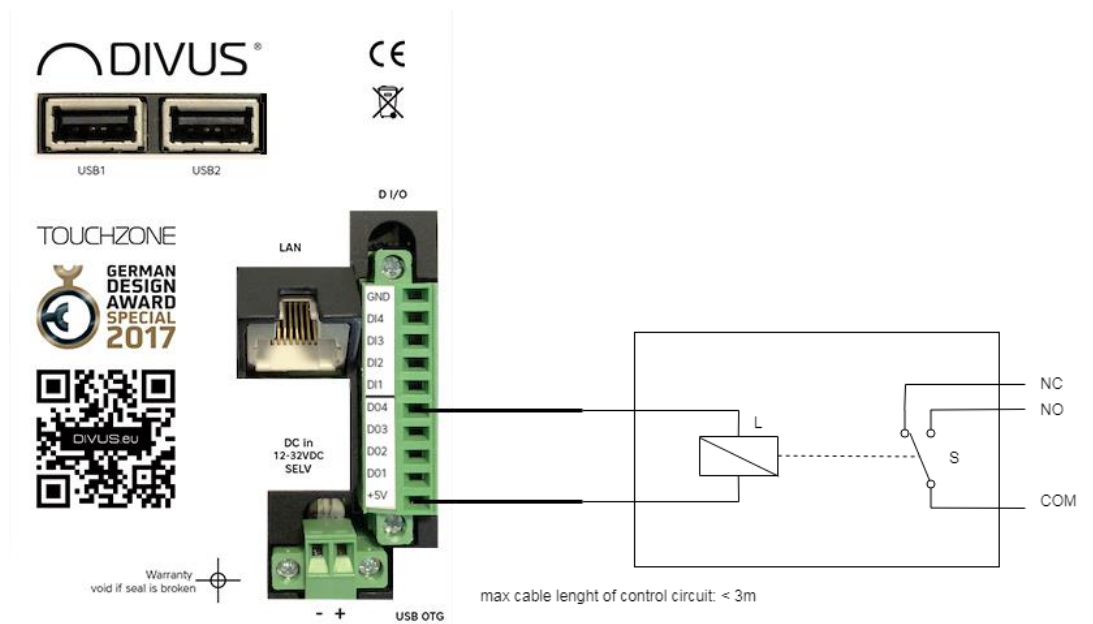
1.3.1 DIO (DIGITAL INPUT/OUTPUT)

DIVUS TOUCHZONE is equipped with both digital inputs and outputs, in order to interact and control with other systems. The DIO pin assignment is as follows:

Pin no.	Signal	CN15
1	GND	
2	DI4	
3	DI3	
4	DI2	
5	DI1	
6	DO4	
7	DO3	
8	DO2	
9	DO1	
10	+5V	



The digital output is of type open-collector with 5V power supply and max 0.13A output, which allows to directly connect corresponding relays.



Voltage output HIGH (on)	0 V 	Voltage input HIGH (on)	0 V
Voltage output LOW (off)	5 V 	Voltage input LOW (off)	5 V
Output current (open-collector)	max. 0.13A		

1.3.2 DC IN

DC IN of the device is as follow:

Pin no.	Signal	CN19
1	Vin +	
2	Vin -	

1.4 PRODUCT CONTENTS

Hardware:

- DIVUS TOUCHZONE
- Fixing set to be used with a wall mount kit
- Retention screws
- Aluminum front cover

Software:

- Pre-Installed, fully functional operating system

Documentation:

- Quick Start Guide
- Version overview

Available for download:

- Technical manual
- Warranty conditions

2 Commissioning

2.1 GROUNDING

The following must be heeded to ensure that all electrical interference is safely absorbed:

- Connect the metallic wall mount kit with a central grounding point using the shortest possible distance.
- Make sure that the connection between the unit and the grounding point has the lowest possible impedance.
- All data cables connected to the unit must be shielded.
- The shields must be grounded at both ends. A low-impedance connection must be established between the linked units. High compensation currents over the cable shields caused by potential differences must be excluded.
- Use a green-yellow cable with a minimum cross section of 2,5mm² for ground connection.

2.2 COMMISSIONING

The power supply of the TOUCHZONE is provided either through "Power over Ethernet (PoE)" - IEEE 802.3at - (TZ07, TZ10 and TZ15) or through the DC input on DC in plug (TZ07, TZ10, TZ15 and TZ19). Using DC input, the used power supply needs to provide safety extra-low voltage (SELV) and has to be compliant to EN60950-1 par.2.5 and EN61558-2-6 or equivalent. The TZ07 and TZ10 versions must be powered through a supply providing max. 15 VA under normal operating conditions.

For all versions you must have the means for disconnection incorporated in the fixed wiring. Have the appliance connected to the mains using a device that allows the appliance to be disconnected from the mains at all poles with a contact opening. If using PoE+, ensure that your switch, injector or power adapter is fully PoE+ compliant.

Power consumption of the device is defined in the technical documents.



Pull out the power plug before opening the unit. Check all cable connections before commissioning the system. Make sure that all voltages and signals meet the specifications.



Only TZ07, TZ10 and TZ15 support PoE+. TZ19 must be powered through *DC in*.



Though TZ07, TZ10 and TZ15 support hybrid power supply by both PoE+ and *DC in* at the same time, only one power input should be used at a time.



DIVUS offers a warranty of 24 months after shipment (valid from the date of delivery) if not stated otherwise for the DIVUS TOUCHZONE. The warranty is only valid if all transportation takes place with the original package of the product, including all shock absorbing elements.

Every repair shipment has to be approved by the technical support. Contact us under support@divus.eu. On that occasion you also get all necessary information, as well as the accompanying letter "repair request".

The original packaging has to be used for all transportations, including the one back to the distributor or manufacturer in case of repair. Otherwise DIVUS can't give any guarantee for the product. Any damage occurring to the product if incorrectly packed will be charged to the client. Furthermore in such a case DIVUS will charge an additional fee for packing.

For repair processes the "repair request" document has to be compiled and returned with the product to allow us to guarantee an efficient service and a two week repair time.

For technical reasons only complete products can be returned for repair.

2.3 INSTALLATION

2.3.1 INSTALLING WALL MOUNT BOX

The wall mount box may be installed in a cut out in the wall, in a wooden structure thick at least 1.5 cm or in a drywall construction. The cut out has to respect the sizes specified in the technical data and has to be at least 8 cm deep.

In the wall cut out, the box can be built in or it can be screwed on in a piece of furniture. It is important that the fore edge of the wall mount kit is flat and horizontally to the surface of the wall or the piece of furniture.

The wall mount kit offers cable access on all four sides.

2.3.2 INSTALLING TZ

Switch off the system/plant supply voltage. Connect the power and controlling cables. After connecting the magnet to the back of the mount box, the TZ is put into the wall mount box and is fixed with the screws included in the packing. Now you can install your design frame with slight, even pressure.



Unauthorized changes or modifications to the TZ configuration may result in permanent damage to the system or its functionality. Only authorized trained personnel are allowed to make any modifications.



If you need to remove the design frame, extract it from the mounting horizontally. One-sided traction or slanted installing may damage the frame.



In order to be able to dissipate the heat produced by the equipment, it must be guaranteed that the temperature within the mounting box does not exceed **45°C**. Under normal conditions this is given with an ambient temperature of up to **30°C**. If these values are exceeded, additional cooling has to be provided.

The equipment must be installed vertically, i.e. the front plate must be in an angle of 90° to the base plate. Installation has to comply to HD 60364-4-41 or other national prescriptions.

3 Operating System

DIVUS TOUCHZONE is delivered with Android operating system version 6.0.1 (M). This operating system is used on a wide variety of smartphone and tablets and offers many capabilities and possibilities through its open source core and all the manufacturer-specific applications. General information about the Android operating system can be found under www.android.com.

Besides the standard applications which are by default part of the operating system (e.g. gallery, music, player, etc.), the following proprietary applications are installed by DIVUS:

- DIVUS LAUNCHER 2
- DIVUS OPTIMA
- DIVUS VIDEOPHONE 4
- DIVUS KIBRO
- DIVUS MÜLLPLANER
- DIVUS IP CAM VIEWER
- DIVUS HEARTBEAT
- DIVUS SCREENCLEANER
- System-Update
- TEAMVIEWER QuickSupport



More details about the single applications can be found in the corresponding manuals.

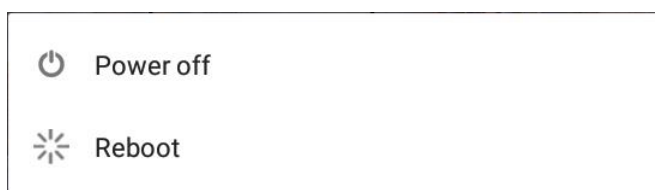
As in the previous version, also the new TZ series offers a navigation bar at the bottom of the display, which should simplify the navigation on the device. Besides the HOME button, this navigation bar contains additional soft keys required for the navigation within the Android system as can be seen in the below screenshot:



The 7 keys within the navigation bar from left to right are:

- POWER
- VOLUME DOWN
- BACK
- HOME
- RECENTS
- VOLUME UP
- MENU

The POWER key opens up the power menu, which allows to safely turn off or reboot the TZ.



Always use this menu in order to shutdown the DIVUS TOUCHZONE! An abrupt removal of the power supply can interrupt running processes and cause the malfunction of different apps.

The VOLUME DOWN key lowers the volume of the DIVUS TZ and shows the current volume through a corresponding slider element, which also offers additional audio controls.

The BACK key (depending on the shown app) permits to return to the previously shown page or to close the currently opened app.

The HOME key has the same functionality as the hardware HOME button and brings you back to the main window of DIVUS LAUNCHER. The previously active app is brought to the background and continues running (the HOME button/key does NOT terminate running apps).

The RECENTS key shows the recently opened apps, which allows a quick switching between different applications and – through swipe gesture – also gives the possibility to close apps.

The VOLUME UP key increases the volume of the DIVUS TZ and – like the VOLUME DOWN key – shows the current volume through a corresponding slider element, which also offers additional audio controls.

The MENU key functionality depends on the currently shown app and – if available – shows additional menu and configuration options. The following screenshot shows an example of such a menu:



3.1 FEATURES

The pre-installed DIVUS apps provide the user with various functions to control the TOUCHZONE and other external systems. These features include, among others:

- Customization and configuration of the DIVUS TOUCHZONE.
- Management of installed apps.
- Pre-installed DIVUS OPTIMA app for building automation.
- Pre-installed DIVUS VIDEOPHONE 4 app for interaction with intercom systems.
- Pre-installed DIVUS KIBRO app for internet navigation.
- Pre-installed DIVUS MÜLLPLANER app to manage household waste.
- Pre-installed DIVUS IP CAM VIEWER app to visualize IP cameras.
- Pre-installed DIVUS HEARTBEAT app, used to access reports of DIVUS HEARTBEAT.
- Pre-installed DIVUS SCREENSCLEANER app, used during screen cleaning.

In order to get the newest features be sure that your DIVUS TZ has loaded the latest software version. An update for DIVUS TZ to the latest operating system version can be requested using the following form:

<https://www.divus.eu/en/200-touchzone-softwareupdate-en>



Single apps can be installed/updated through the DIVUS SYNCHRONIZER tool. For more information about DIVUS SYNCHRONIZER can be found in its dedicated manual.

3.2 HARDWARE INTERFACES

DIVUS TOUCHZONE offers different kinds of interfaces as well on the rear as on the front side. All interfaces are integrated and functional on Android level and can be accessed from custom applications through corresponding libraries. The following list shows the interfaces currently used by the applications of DIVUS, as well as the interfaces currently free and therefore usable in custom apps. In case you should need the function libraries for your own customizations, please refer to the technical support of DIVUS:

Front side:

- Proximity/brightness sensor: mainly used by DIVUS LAUNCHER.
- Microphone: among others used by DIVUS VIDEOPHONE.
- Micro SDHC card slot: connected micro SD cards can be managed through the device settings.
- RGB-LED: used by DIVUS LAUNCHER for status feedback.
- Speaker: among others used by DIVUS VIDEOPHONE.

Rear side:

- DIO: digital input/output, used by various DIVUS apps.
- USB1+2: used to connect USB devices (e.g. USB storages, USB mouse).
- USB OTG: DIVUS TOUCHZONE can be used as mass storage on a PC.



Generally USB devices compatible with Linux operating systems that are using the default drivers (HID devices, mass storages) can be used in combination with DIVUS TZ.

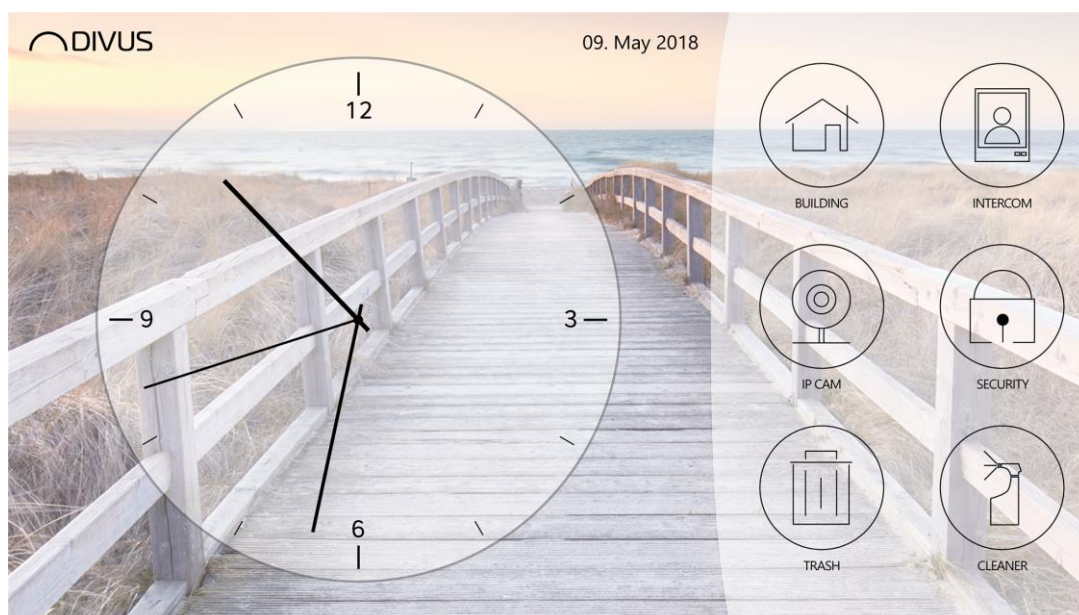


The present interfaces may vary depending on your model!

4 DIVUS apps

4.1 DIVUS LAUNCHER 2

The DIVUS LAUNCHER 2 app is the main app of DIVUS TOUCHZONE, which acts as the entry point for the device. The app provides access to other functionalities and settings of the device, and in its main screen it's possible to link to other apps or web URLs for easier access. The overall look and feel can be customized and adapted to the required needs. This new version of the app has an improved design and offers more functionalities and possibilities compared to the previous version. DIVUS LAUNCHER 2 is the heart and soul of DIVUS TOUCHZONE.



Detailed information about the app can be found in its dedicated manual which can be downloaded from our website www.divus.eu.



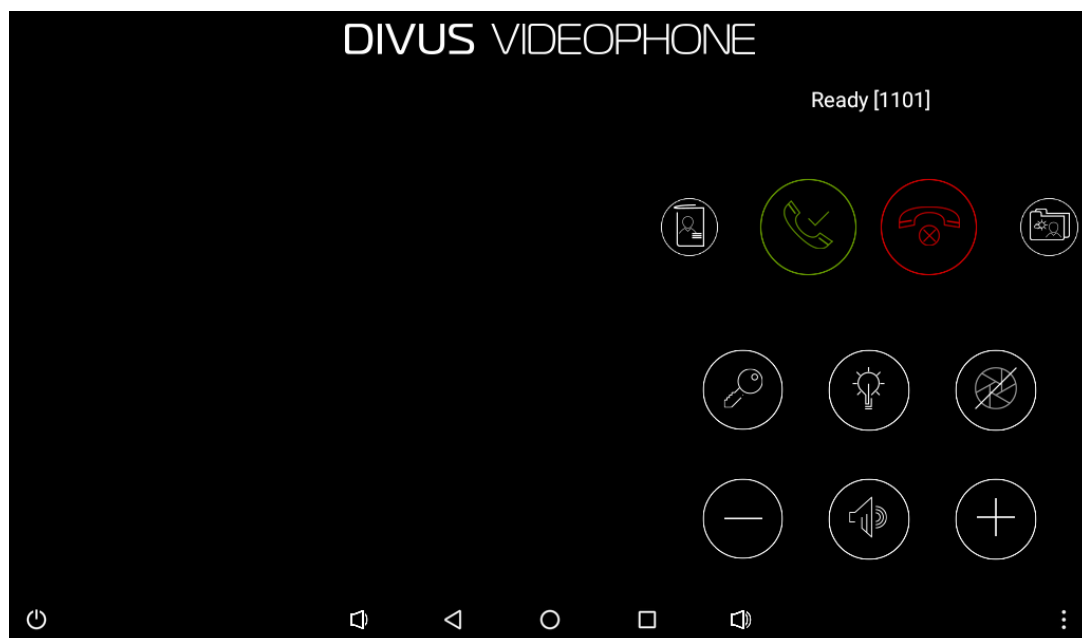
DIVUS LAUNCHER 2 is currently available only for DIVUS TOUCHZONE running Android 6.



The previous version of DIVUS LAUNCHER is not supported on Android 6.

4.2 DIVUS VIDEOPHONE 4

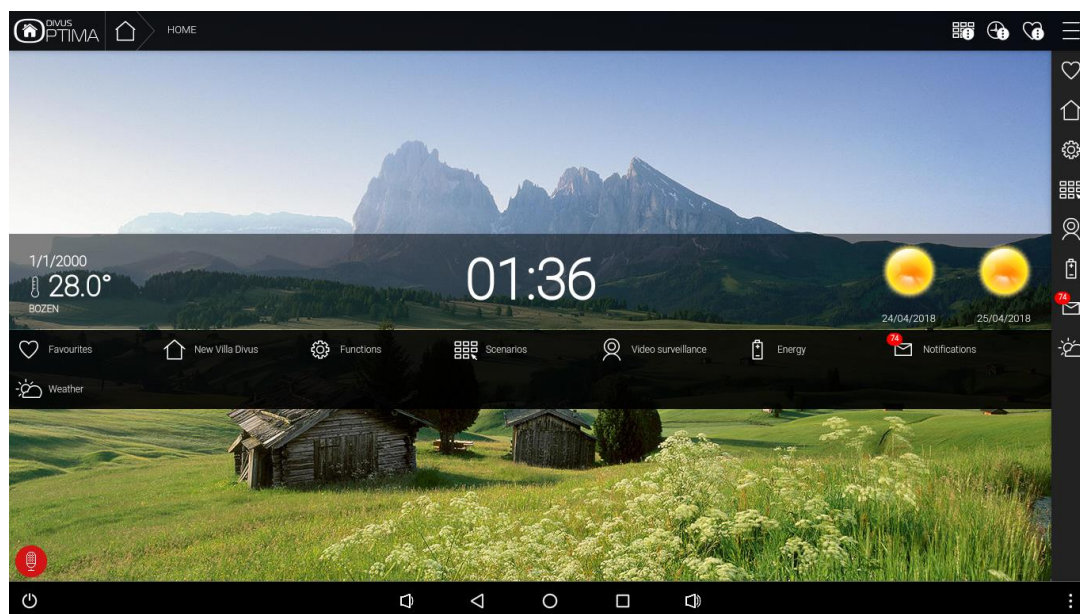
DIVUS VIDEOPHONE 4 is the intercom app designed by DIVUS. It offers a vast set of useful functions and customization. Various internal and external units of the integrated phonebook can be customized, allowing also to be connected with multiple video signals. DIVUS TOUCHZONE 4 is the ideal solution for intercom systems.



Detailed information about the app can be found in its dedicated manual which can be downloaded from our website www.divus.eu.

4.3 DIVUS OPTIMA

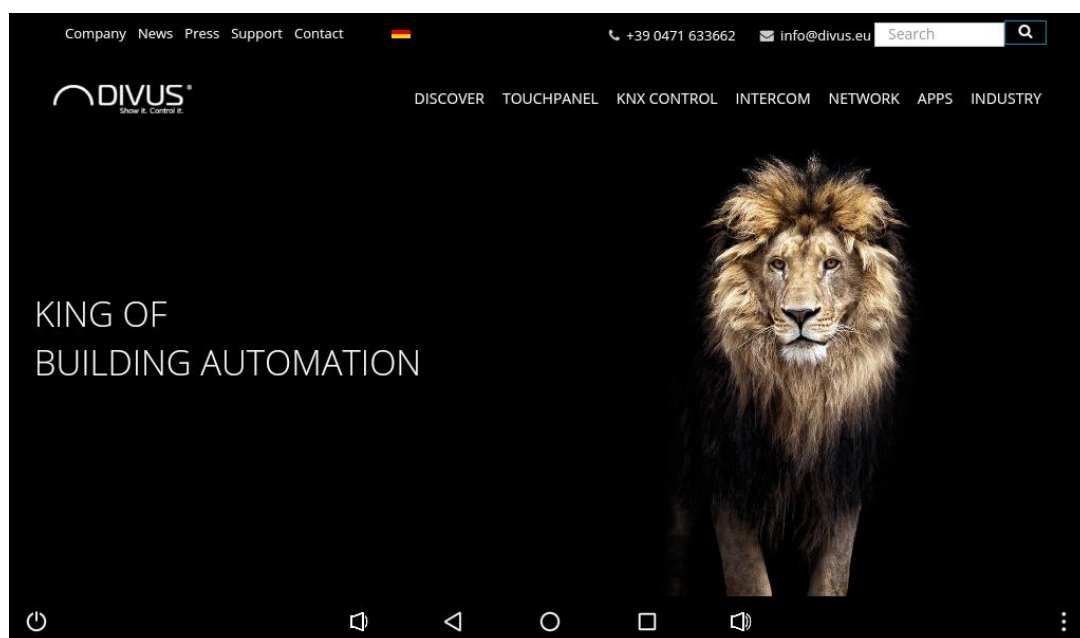
The DIVUS OPTIMA app is designed to be used together with KNX CONTROL and acts as a web app, which optimizes and displays the content in fullscreen. The app allows an easier access compared to regular browsers. With DIVUS OPTIMA you can control your building automation with the click of a finger.



Detailed information about the app can be found in its dedicated manual which can be downloaded from our website www.divus.eu.

4.4 DIVUS KIBRO

DIVUS KIBRO is a kiosk browser app which allows to show web contents in full screen mode. This is the ideal app to access web-based systems for which no dedicated app exists. Its integrated cache and memory control routines will avoid that continuous data streams cause problems. DIVUS KIBRO allows easy internet navigation on your DIVUS TOUCHZONE.



Detailed information about the app can be found in its dedicated manual which can be downloaded from our website www.divus.eu.

4.5 DIVUS MÜLLPLANER

This app aims at help you organize and remind you of disposing your household waste and garbage, letting you focus on more important things. DIVUS MÜLLPLANER offers a calendar to have an overview over past and coming garbage pickups and by a simple click on a day you can remove existing pickups and easily add new colored pickups with predefined intervals. Further, you can also set up various notifications to remind you in advance of upcoming pickups and you can also manage holidays. With the app DIVUS MÜLLPLANER one of your housekeeping chores becomes as easy as can be.



Detailed information about the app can be found in its dedicated manual which can be downloaded from our website www.divus.eu.



DIVUS MÜLLPLANER is available only for TOUCHZONE running Android 5 or higher.

4.6 DIVUS IP CAM VIEWER

With this app you have the possibility to access your IP cameras surrounding your home or your remote holiday resort, seeing in real-time what is happening around you, and help you feel more secure and in control. DIVUS IP CAM VIEWER allows you to easily connect local/remote IP cameras of various types and take screenshots of the current camera image. You can view up to 6 cameras simultaneously and by a simple click quickly see one in full screen. With the app DIVUS IP CAM VIEWER you can get the most out of your IP cameras and increase your surveillance capabilities; now you will always know what is happening around you.



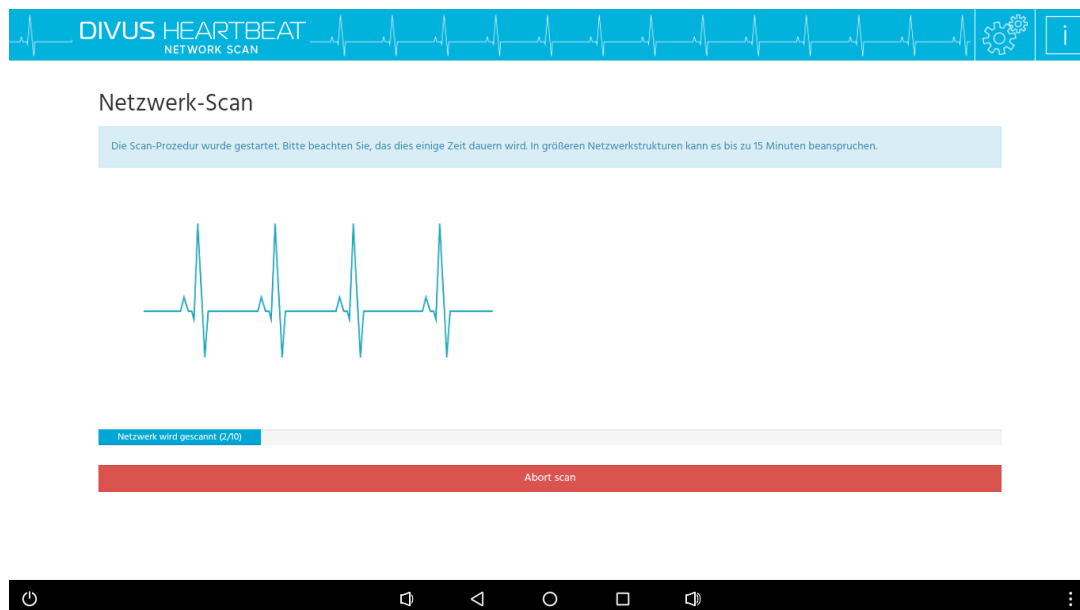
Detailed information about the app can be found in its dedicated manual which can be downloaded from our website www.divus.eu.



DIVUS IP CAM VIEWER is available only for DIVUS TOUCHPANELS running Android 5 or higher.

4.7 DIVUS HEARTBEAT

With this app you can access the reports of DIVUS HEARTBEAT directly from your TOUCHZONE. You have to configure the IP/hostname of your DIVUS HEARTBEAT, and the app will automatically connect to a webpage where a report of the current network will be generated. Once the report is generated, you can send it to multiple e-mail addresses so that you can view it from your PC. The DIVUS HEARTBEAT app goes hand in hand with your DIVUS HEARTBEAT.



Detailed information about the app can be found in its dedicated manual which can be downloaded from our website www.divus.eu.

4.8 DIVUS SCREENCLEANER

The functionality of DIVUS SCREENCLEANER is self-explaining and really simple: by starting this app, all touch inputs will be blocked for 30 seconds and a cleaning screen with a small animation is shown. Furthermore a countdown is shown, which indicates how much time is left for cleaning. While the app is running, the glass front of DIVSU TZ can be cleaned without the risk of unwanted operation. Once the countdown reaches 0, the app will be closed automatically and the touch input is re-enabled. With DIVUS SCREENCLEANER it's possible to safely clean the screen of the TZ.



Further information about the DIVUS SCREENCLEANER app can be requested by contacting the technical support of DIVUS.

4.9 DIVUS SYNCHRONIZER

DIVUS SYNCHRONIZER is a tool for PC through which DIVUS Android devices can be easily managed. This tool connects to the device through the network, without the need to physically be at the device and without unmounting the device. It offers the possibility to create a backup and restore an existing device to a previous state, remote-control the device, facilitate configuration on the device through the use of keyboard and mouse, and much more! DIVUS SYNCHRONIZER offers you the possibility to work easier and faster, saving you time and



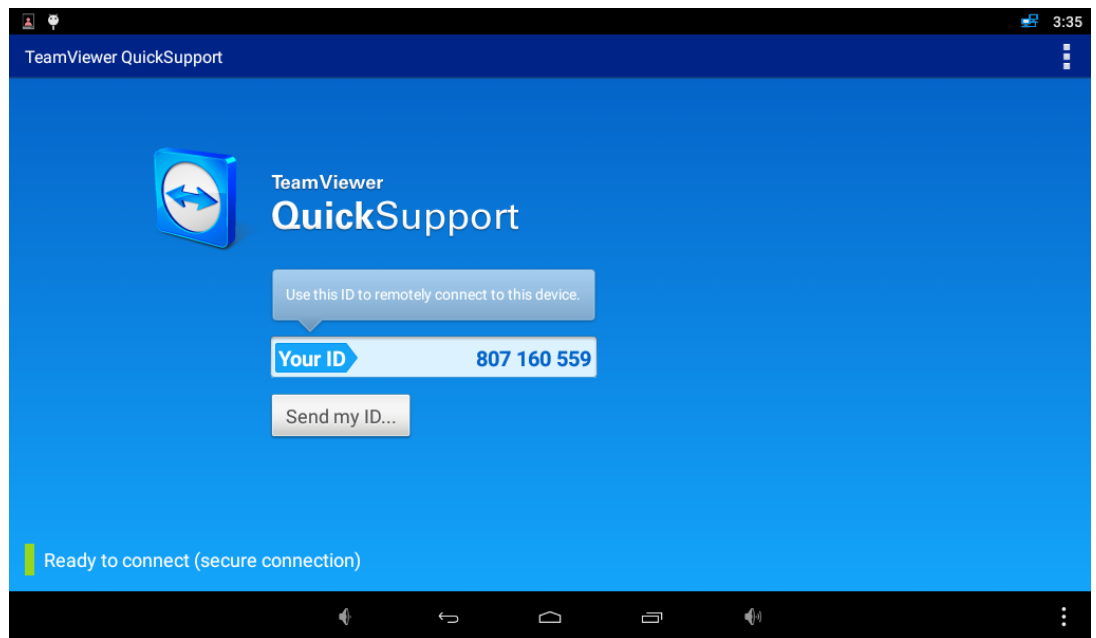
money.



Detailed information can be found in the dedicated manual which can be downloaded from our website www.divus.eu.

4.10 TEAMVIEWER QUICKSUPPORT

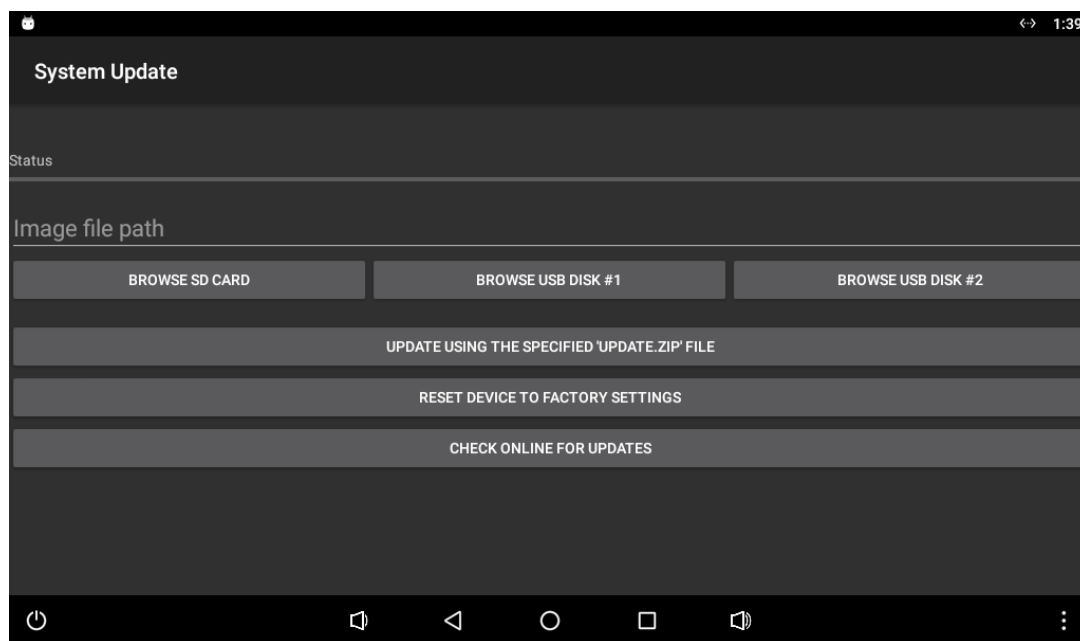
The TZ at delivery already contains the app “TeamViewer QuickSupport”, which should simplify support cases, allowing the DIVUS personnel to connect remotely to the device (after authorization by the customer). Naturally this requires that DIVUS TOUCHZONE is correctly connected to internet.



If the displayed ID is passed to the DIVUS personnel, a remote connection can be initiated and an efficient support can be given. Further information about the usage of “TeamViewer QuickSupport” can be found on www.teamviewer.com.

4.11 SYSTEM UPDATE

The “System Update” app is used to either update DIVUS TOUCHZONE to the latest version or to reset it to factory defaults (deleting all user data like settings, installed apps, Google accounts, etc.).



After Starting this app you can either update your DIVUS TOUCHZONE using a special file or you can reset the device to factory settings. By selecting the last option the device will automatically reboot, execute the reset and start with the factory defaults.

The update of the operating system is as easy: if DIVUS releases a new version, it happens through a so-called “Update.zip” file through an online repository. This update can be copied to a micro SD card or USB stick and can then be selected inside the System Update app.

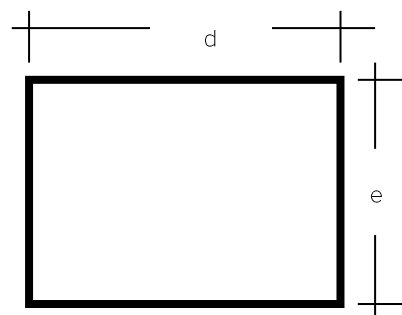
The app also offers an OTA functionality (OTA = “over the air”) to get updates online from the DIVUS server. If your DIVUS TZ is connected to the internet, simply click on the corresponding button: if a newer version is found on the DIVUS server, it is automatically offered for download. Afterwards the file is verified and – if confirmed by the user – automatically installed.

5 Technical data

5.1 MECHANICAL DATA

Outside dimensions DIVUS TOUCHZONE (LANDSCAPE):

	TZ07	TZ10	TZ15	TZ19
Width (d):	213 mm	288 mm	435 mm	515 mm
Height (e):	136 mm	200 mm	306 mm	345 mm



Cut-out dimensions wall mount box:

	MTZ07	MTZ07W	MTZ10	MTZ15	MTZ19
Width (d):	210 mm	220 mm	281 mm	428 mm	507 mm
Height (e):	129 mm	141 mm	189 mm	291 mm	330 mm
Depth:	75 mm	80 mm	80 mm	80 mm	80 mm

Dimensions mortarless mount kit:

	MTZ07T	MTZ07WT	MTZ10T	MTZ15T	MTZ19T
Width (d):	210 mm	210 mm	287 mm	434 mm	513 mm
Height (e):	190 mm	190 mm	189 mm	291 mm	330 mm
Depth:	75 mm	80 mm	80 mm	80 mm	80 mm

For the cutout see the wall mount box.

Fixing elements:

DIVUS TOUCHZONE has to be fixed to the wall mount box using the furnished screws / magnets.

Mechanical characteristics:

Front face: alloy anodized

PC Unit: alloy anodized & plastic

5.2 DIVUS TOUCHZONE DATA OVERVIEW

	TZ07 - V3	TZ10 - V3	TZ15 - V3	TZ19 - V3
Type of design	ultra compact embedded PC for wall mount; android operation system for your applications; noiseless and without any rotating part, ultra low power homogeneous smooth glass surface with aluminium side border			
VERSIONS				
With Black cover glass	TZ07-B	TZ10-B	TZ15-B	TZ19-B
With White cover glass	TZ07-W (ultra clear glass)	TZ10-W (clear glass)	TZ15-W (clear glass)	TZ19-W (ultra clear glass)
SOFTWARE				
Operating System	Android 6			
FRONT UNIT	7,0" - 17,78 CM WIDESCREEN LED BACKLIGHT TFT	10,1" - 25,6 CM WIDESCREEN LED BACKLIGHT TFT	15,6" - 39,6 CM WIDESCREEN TFT LED BACKLIGHT TFT	18,5" - 47,0 CM WIDESCREEN TFT LED BACKLIGHT TFT
Luminosity	500 cd/m ²	250 cd/m ²	300 cd/m ²	300 cd/m ²
Contrast	400 : 1	400 : 1	500 : 1	1000 : 1
Resolution (in Pixel)	WSVGA (1024*600)	WSVGA (1024*600)	HD (1366*768)	HD (1366*768)
MTBF backlight	50.000 h	30.000 h	50.000 h	50.000 h
Method of operating	Projected capacitive touch screen with 3 mm glass front, dual touch capable			
Rating	IP20 according EN 60529			
GENERAL CHARACTERISTICS				
Processor	Fanless ultra low consumption Cortex-A53 Quad Core 1,5GHz			
Memory	2 GB (optional 4GB, connected to MOQ)			
Free expansion slots	microSD Slot			
Power Supply	PoE+ compatible with Cat5e/Cat6 UTP cable, max 100m IEEE Std 802.3at™ 12-32 VDC			NO
Power consumption without peripherals	Max. 7 W	Max. 16 W	Max. 25 W	Max. 30 W
Guarantee	24 Months*			
DRIVES				
Storage medium	High speed Flash Memory 16GB eMMC (available disk space tbd)			
	TZ07-V3	TZ10-V3	TZ15-V3	TZ19-V3
SENSORS				
Proximity sensor	INCLUDED	INCLUDED	INCLUDED	INCLUDED
G Sensor for orientation	AUTOMATIC PORTRAIT / LANDSCAPE ORIENTATION			
Brightness Sensor	INCLUDED			
MULTIMEDIA				
Input/output	Loudspeaker 2 Watt RMS (ext) Microphone (ext)			
Functionality	Integrated Echo cancellation for bi-directional interphone communication			
INTERFACES				
LAN/Ethernet/BT	1 x GbE on RJ45 - 45 degree with 802.3at™ (ext) 1 x WiFi 802.11 a/b/g/n - optional 1 x Bluetooth 4.0 LE - optional			
USB (Universal Serial Bus)	2 x USB 2.0 (2x ext) 1 x mini USB OTG			
Serial	1 x RS-232/422/485 (int, optional on pinheader)			
Digital Input/Output	GPIO - 4 x Input / 4 x Output for 4 relays with max. 100 mA/5VDC Clocking is possible, frequency depends on APK			
Battery	Battery free system - RTC with capacitor backup			
SURVEILLANCE				
Status LEDs	1 x RGB LED - covered by design frame			
AMBIENT CONDITIONS				
EMC	EN 55011, 55022, 500081			
Temperature	+0°C to +30°C max.			
Relative humidity	5% to 80% at 25°C (no humidity/condense)			
Authorization	CE			

5.3 DIVUS TOUCHZONE WALL MOUNT BOX

DIMENSIONS

Cut-Out with MTZ [mm]	129 x 210 x 75	281 x 189 x 80	428 x 291 x 80	507 x 330 x 80
Outside with Frame CTZ [mm]	136 x 213 - This product is delivered with capacitive touch frame	288 x 200 - This product is delivered with capacitive touch frame	435 x 306 - This product is delivered with capacitive touch frame	515 x 345 This product is delivered with capacitive touch frame
Weight	0,9 kg	4 kg	7 kg	9 kg

MECHANICAL CHARACTERISTICS

Mounting	Fast and easy one man mounting system with wall mount boxes			
Front	Steel and alloy anodized, to use with the wall mount box (MTZ) and cover (CTZ)			
PC Unit	EMC proofed	Alloy anodised, EMC proofed		

*warranty ex works, normally 24 months, fixed at order. All data refer on print date, errors and changes excepted.

NOTE: Internal connections are intended as inside the box unit, normally on pin header, external ones as outside the box. Nevertheless, once mounted in the wall, only connections described as "front accessible" will be reachable for the customer.

TYPES	IN WALL BOX	IN MORTARLESS BOX
for TZ07 – 7,0"	MTZ07	MTZ07-T
for TZ10 – 10,1"	MTZ10	MTZ10-T
for TZ15 – 15,6"	MTZ15	MTZ15-T
for TZ19 – 18,5"	MTZ19	MTZ19-T

TECHNICAL DATA

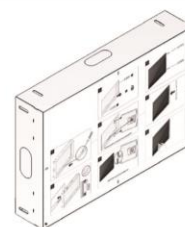
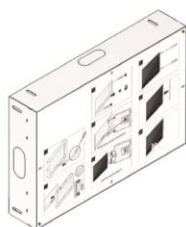
Type of design	compact, stable and flat wall mount box for flush mounting	compact flush mounting kit for mortarless constructions
----------------	--	---

DIMENSIONS [MM]

Cut-Out fixing kit 7,0"	129 x 210 x 75	129 x 210 x 75 - required space 190 x 210 x 75
Cut-Out fixing kit 10,1"	281 x 189 x 80	281 x 189 x 80 - required space 341 x 189 x 80
Cut-Out fixing kit 15,6"	428 x 291 x 80	428 x 291 x 80 - required space 488 x 291 x 80
Cut-Out fixing kit 18,5"	507 x 330 x 80	507 x 330 x 80 - required space 567 x 330 x 80
Weight	ca. 4kg	ca. 4kg


MECHANICAL CHARACTERISTICS


Wall mount box	TZ 7 plastic with cover for clean installation	TZ 7 plastic with cover for clean installation
	TZ 10 - 15 - 19 steel plate with cover for clean installation	TZ 10 - 15 - 19 steel plate with cover for clean installation
Cable access	1xtop, 1xbottom, 1xleft, 1xright	1xtop, 1xbottom, 1xleft, 1xright



Grounding the Wall Mount Box needs to be professionally grounded

MONTAGE / INSTALLATION INSTRUCTIONS / INSTALLAZIONE

 Die Unterputzdose und das Trockenbaukit können in einem Ausschnitt in der Wand oder in einem bis zu 1,5 cm dünnen Möbelstück, sowie in einem Trockenbau befestigt werden. Der Ausschnitt muss den in den technischen Details spezifizierten Maßen entsprechen und beim Wandeinbau mindestens 9 cm tief sein. Im Wandausschnitt wird die Unterputzdose eingemauert, während sie im Möbelstück angeschraubt werden kann. Es ist wichtig, dass die vordere Kante der Unterputzdose plan und waagrecht zur Oberfläche der Wand oder des Möbelstückes ist.

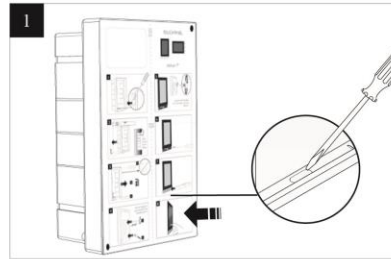
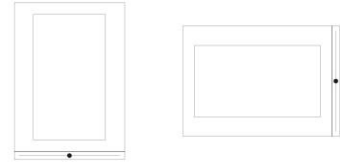
 The wall mount box and the mounting kit may be installed in a cut out in the wall, in a wooden structure thick at least 1,5 cm or in a dry mortarless construction. The cut out has to respect the sizes specified in the technical data and has to be at least 9 cm deep. In the wall cut out, the box can be built in while it can be screwed on in a piece of furniture. It is important that the fore edge of the box is flat and horizontally to the surface of the wall or the piece of furniture.

Wall mount kit – mounting MTZ07

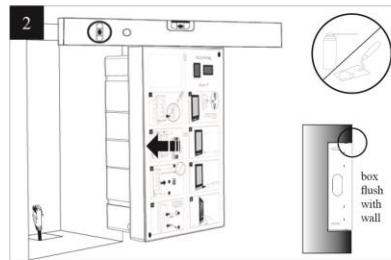
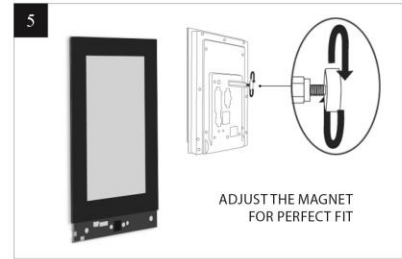
Mounting Guide

DIVUS TOUCHZONE

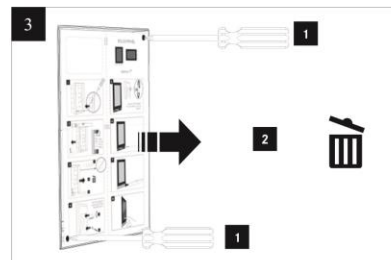
MTZ07 . Mounting Guide for TZ07



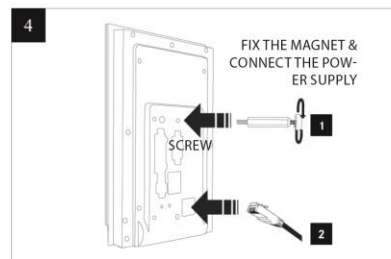
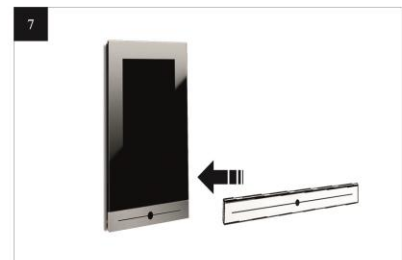
Mounting Guide
MTZ07



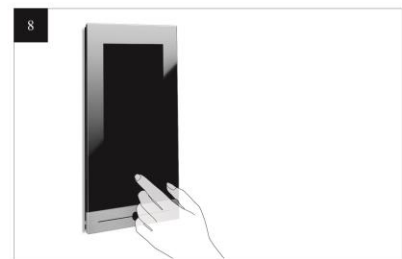
Mounting Guide
MTZ10



Mounting Guide
MTZ15



Mounting Guide
MTZ19

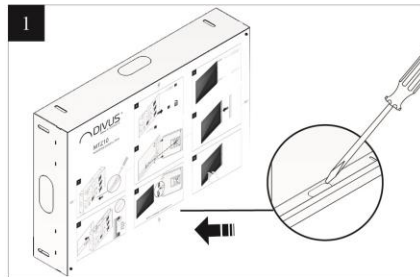


Wall mount kit – mounting MTZ10

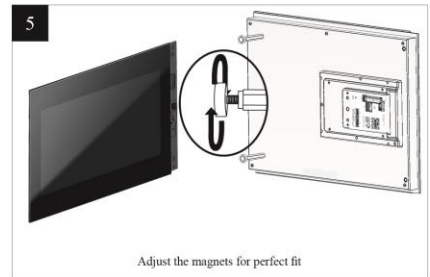
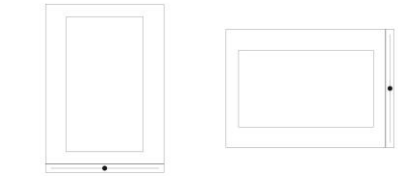
Mounting Guide

DIVUS TOUCHZONE

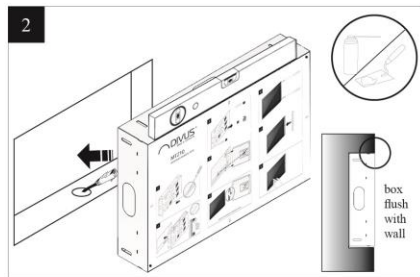
MTZ10 . Mounting Guide for TZ10



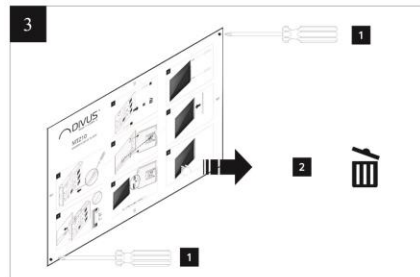
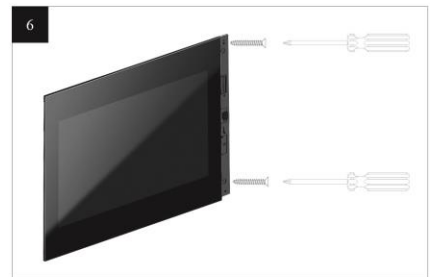
Mounting Guide
MTZ07



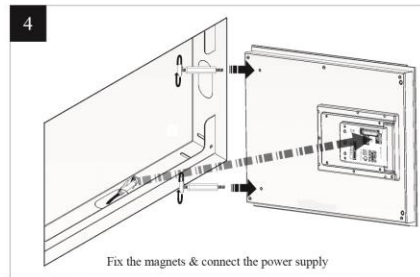
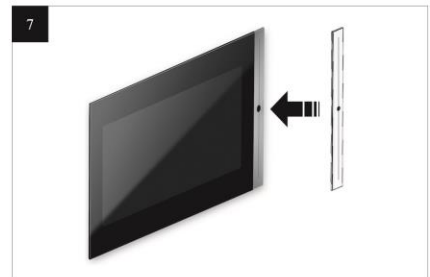
Adjust the magnets for perfect fit



Mounting Guide
MTZ10



Mounting Guide
MTZ15



Fix the magnets & connect the power supply

Mounting Guide
MTZ19

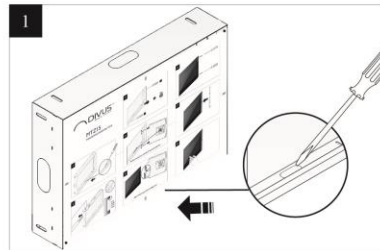


Wall mount kit – mounting MTZ15

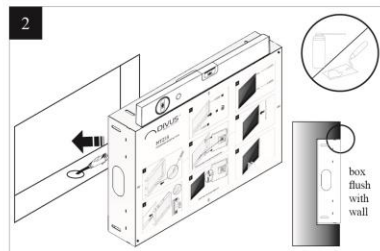
Mounting Guide

DIVUS TOUCHZONE

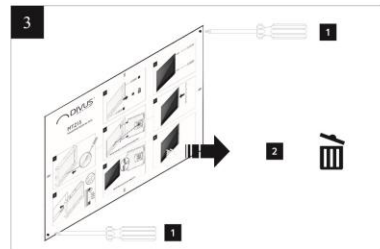
MTZ15 . Mounting Guide for TZ15



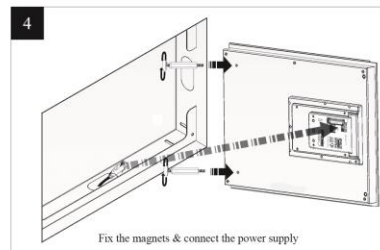
Mounting Guide
MTZ07



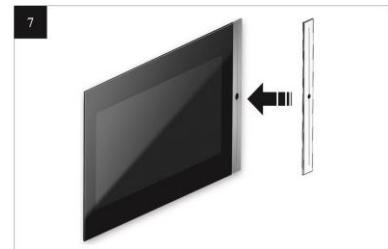
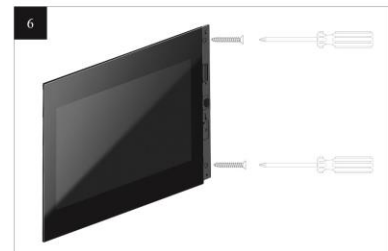
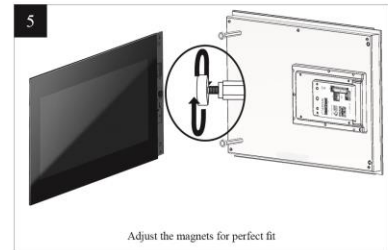
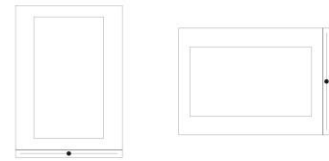
Mounting Guide
MTZ10



Mounting Guide
MTZ15



Mounting Guide
MTZ19

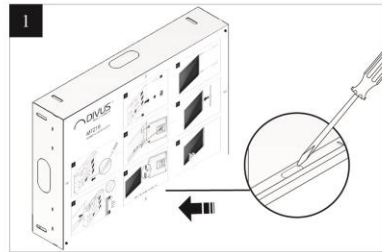


Wall mount kit – mounting MTZ19

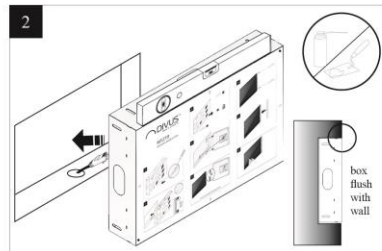
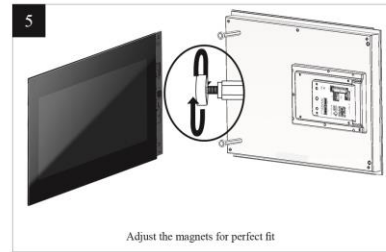
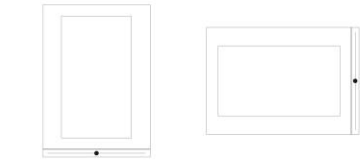
Mounting Guide

DIVUS TOUCHZONE

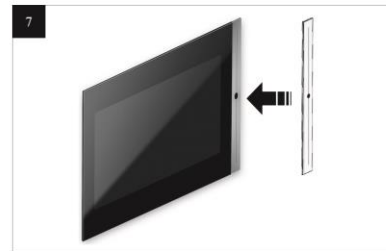
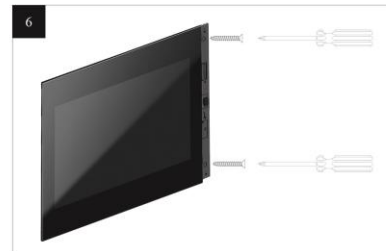
MTZ19 . Mounting Guide for TZ19



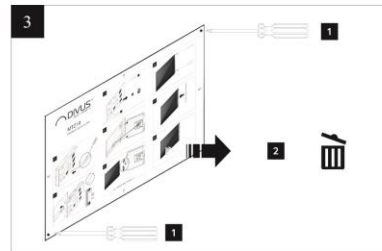
Mounting Guide
MTZ07



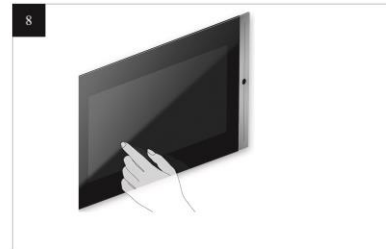
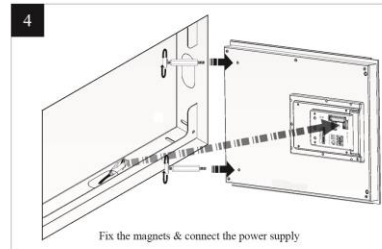
Mounting Guide
MTZ10



Mounting Guide
MTZ15



Mounting Guide
MTZ19



5.4 MAINTENANCE AND UPKEEP

DIVUS TOUCHZONE is a completely fanless system thus strongly reducing the necessary maintenance expenses.



NOTE: Additional information about the components which are used in DIVUS TOUCHZONE may be found in the original documentation of the manufacturer.

6 Appendix

6.1 RECYCLING INFORMATION



English

Information on Disposal of Old Electrical and Electronic Equipment (applicable for EU countries that have adopted separate waste collection systems)

Products with the symbol (crossed-out wheeled bin) cannot be disposed as household waste.

Old electrical and electronic equipment should be recycled at a facility capable of handling these items and their waste by products. Contact your local authority for details in locating a recycle facility nearest to you. Proper recycling and waste disposal will help conserve resources whilst preventing detrimental effects on our health and the environment.

Deutsch

Entsorgung von gebrauchten Elektrischen und Elektronischen Geräten (anzuwenden in den Ländern der Europäischen Union und anderen europäischen Ländern mit einem separaten Sammelsystem für solche Geräte)

Das Symbol (durchgestrichene Mülltonne) auf dem Produkt oder seiner Verpackung weist darauf hin, dass dieses Produkt nicht als normaler Haushaltsabfall behandelt werden darf, sondern an einer Annahmestelle für das Recycling von elektrischen und elektronischen Geräten abgegeben werden muss. Durch Ihren Beitrag zur korrekten Entsorgung dieses Produktes schützen Sie die Umwelt und die Gesundheit Ihrer Mitmenschen. Unsachgemäße oder falsche Entsorgung gefährden Umwelt und Gesundheit. Weitere Informationen über das Recycling dieses Produktes erhalten Sie von Ihrer Gemeinde oder den kommunalen Entsorgungsbetrieben.

Italiano

Informazioni sullo smaltimento delle vecchie apparecchiature elettriche ed elettroniche (valido per i paesi europei che hanno adottato sistemi di raccolta separata)

I prodotti recanti il simbolo di un contenitore di spazzatura su ruote barrato non possono essere smaltiti insieme ai normali rifiuti di casa. I vecchi prodotti elettrici ed elettronici devono essere riciclati presso un'apposita struttura in grado di trattare questi prodotti e di smaltirne i loro componenti. Per conoscere dove e come recapitare tali prodotti nel luogo a voi più vicino, contattare l'apposito ufficio comunale. Un appropriato riciclo e smaltimento aiuta a conservare la natura e a prevenire effetti nocivi alla salute e all'ambiente.

Français

Information sur l'élimination des anciens équipements électriques et électroniques (applicable dans les pays de l'Union Européenne qui ont adopté des systèmes de collecte sélective)

Les produits sur lesquels le pictogramme (poubelle barrée) est apposé ne peuvent pas être éliminés comme ordures ménagères. Les anciens équipements électriques et électroniques doivent être recyclés sur des sites capables de trier ces produits et leurs déchets. Contactez vos autorités locales pour connaître le site de recyclage le plus proche. Un recyclage adapté et l'élimination des déchets aideront à conserver les ressources et à nous préserver des leurs effets nocifs sur notre santé et sur l'environnement.

Nederlands

Informatie over het weggooien van elektrische en elektronische apparatuur (particulieren)

Dit symbool geeft aan dat gebruikte elektrische en elektronische producten niet bij het normale huishoudelijke afval mogen. Lever deze producten in bij de aangewezen inzamelingspunten, waar ze gratis worden geaccepteerd en op de juiste manier worden verwerkt, teruggewonnen en hergebruikt. Voor inleveradressen zie www.nvmp.nl, www.ictmilieu.nl, www.stibat.nl. Wanneer u dit product op de juiste manier als afval inlevert, spaart u waardevolle hulpbronnen en voorkomt u potentiële negatieve gevolgen voor de volksgezondheid en het milieu, die anders kunnen ontstaan door een onjuiste verwerking van afval.

Espanol

Información acerca de la eliminación de equipos eléctricos y electrónicos al final de la vida útil (aplicable a los países de la Unión Europea que hayan adoptado sistemas independientes de recogida de residuos)

Los productos con el símbolo de un contenedor con ruedas tachado no podrán ser desechados como residuos domésticos. Los equipos eléctricos y electrónicos al final de la vida útil, deberán ser reciclados en instalaciones que puedan dar el tratamiento adecuado a estos productos y a sus subproductos residuales correspondientes. Póngase en contacto con su administración local para obtener información sobre el punto de recogida más cercano. Un iralamienlo corredo del redclaje y la eliminación de residuos ayuda a conservar los recursos y evita al mismo tiempo efectos perjudiciales en la sai ud y el medio ambiente.