



KNXCONTROL

DIVUS IOPTIMA Manual

Version 1.0

REV03-20160415



GENERAL INFORMATION

DIVUS GmbH
 Pillhof 51
 I-39057 Eppan (BZ) - Italy

Operating instructions, manuals and software are protected by copyright. All rights are reserved. Copying, multiplication, translation and conversion, either partially or as a whole, is not permitted. You are allowed to make a single copy for backup purposes.

We reserve the right to make changes to the manual without prior notification.

We assume no responsibility for any errors or omissions that may appear in this document.

We do not assume liability for the flawlessness and correctness of the programs and data contained on the delivered discs.

You are always welcome to inform us of errors or make suggestions for improving the program.




The present agreement also applies to special appendices to the manual.

This manual can contain terms and descriptions, which improper use by third can harm the copyrights of the author.

Please read the manual before beginning and keep the manual for later use.

The manual has been conceived and written for users who are experienced in the use of PCs and automation technology.

CONVENTIONS

[KEYS]	Keys that are to be pressed by the user are given in square brackets, e.g. [CTRL] or [DEL]
COURIER	On-screen messages are given in the Courier font, e.g. C : \>
COURIER BOLD	Keyboard input to be made by the user are given in Courier bold, e.g. C : \> DIR
"..."	Names of buttons to be pressed, menus or other onscreen elements and product names are given within double quotes. (e.g. "Configuration").
PICTOGRAMS	In this manual the following symbolic are used to indicate particular text blocs.
	<i>Caution!</i> A dangerous situation may arise that may cause damage to material.
	<i>Hint</i> Hints and additional notes
	<i>New</i> New features

INDEX:

1	GENERAL OVERVIEW	4
1.1	INTRODUCTION	4
1.2	REQUIREMENTS	4
2	SETUP	5
2.1	INTRODUCTION	5
2.2	INSTALLATION	5
2.3	CREATE NEW PROJECT	6
2.4	DELETE PROJECTS	8
2.5	SELECT PROJECT AS DEFAULT	8
2.6	USAGE IN COMBINATION WITH THE KNX-CONTROL PDK	9
2.7	EMPTY CACHE	9
3	USAGE	10
4	APPENDIX	11
4.1	NOTES	11

1 General overview

1.1 INTRODUCTION

KNXCONTROL is a product family for the supervision and visualisation of home & building automation systems, which have been realized on the basis of the worldwide KNX standard. The KNXCONTROL device allows managing of all functions of the system through browser access from any PC / MAC / Touchpanel, tablet and smartphone of the last generation, within the same network or remotely via internet.

DIVUS iOPTIMA is a custom app for Apple IPHONE / IPOD TOUCH (named "DIVUS iOPTIMA") and IPAD (named "DIVUS iOPTIMA HD") and can be downloaded for free from the APP STORE; the app offers a faster and easier navigation within the visualisation of the KNXCONTROL products. The screenshots within this user manual show both the design of the IPAD version (screenshots on the left side) and the IPHONE / IPOD TOUCH version (screenshots on the right side). For convenience in this manual both versions will be referred to as "DIVUS iOPTIMA".

1.2 REQUIREMENTS

DIVUS iOPTIMA requires either an APPLE IPHONE (3GS, 4, 4S) or an IPOD TOUCH (third and fourth generation) with operating system iOS 5.0 or higher.

DIVUS iOPTIMA HD requires an APPLE IPAD (version 1, 2 or 3) with operating system iOS 5.0 or higher.

Furthermore it is necessary that the network, in which the KNXCONTROL product is installed, provides WIFI access. Once the app has been configured for the first time, it will also be possible to connect to the interface remotely using the mobile network; this still requires that the remote connection to the KNXCONTROL device has been configured properly as described in its INSTALLATION MANUAL.

2 Setup

2.1 INTRODUCTION

DIVUS IOPTIMA permits to handle one or more KNXCONTROL devices; for each product it is necessary to create a PROJECT within the application.

2.2 INSTALLATION

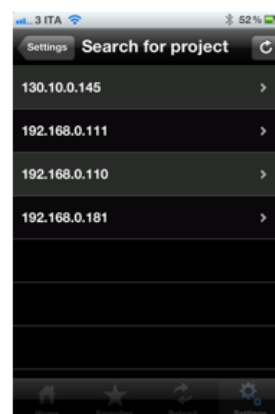
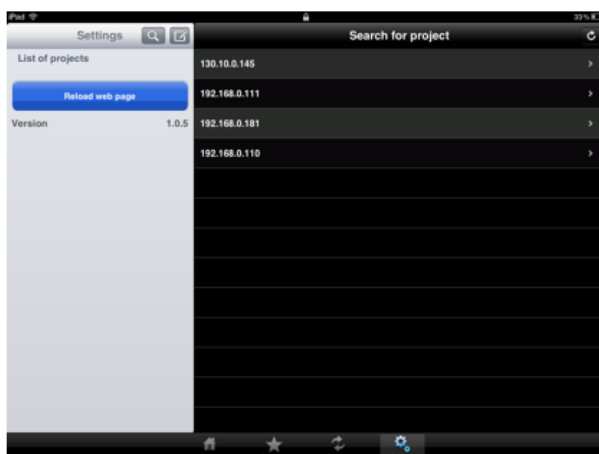
In order to install DIVUS iOPTIMA on your Apple device, please access the APP STORE, search for "iOPTIMA" and select the free DIVUS iOPTIMA app matching your device. At completed download the app can be started through the corresponding icon:



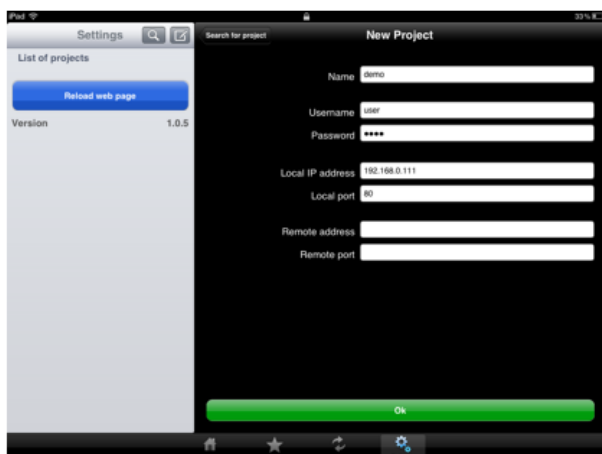
2.3 CREATE NEW PROJECT

In order to create a new project, please follow the steps below:

- Connect your Apple device via WIFI to the network with the KNXCONTROL device
- Select the "SETTINGS" menu from the TOOLBAR of DIVUS iOPTIMA
- Hit the SEARCH button (magnifier icon) on the top and wait until the network is scanned
- If a KNXCONTROL device is found within the network, the corresponding IP address will be shown within the list of scanned addresses:



- Please click on the IP address of the desired KNXCONTROL device in order to open its configuration page.



Insert the following information:

- Name: label used to identify the project
- Username and password: user credentials to access the KNXCONTROL device
- Local IP address: IP address of the KNXCONTROL device within the local network
- Local port: IP port used to access the visualisation of the KNXCONTROL device (default: 80)
- Remote IP address: public IP address of the router connected to the KNXCONTROL device
- Remote port: External router port that forwards the requests to the internal port of the KNXCONTROL device

The remote settings are optional and needed only if you want to use the app to access the KNXCONTROL device also through the mobile network. However, this requires that the remote connection to the KNXCONTROL device has been configured properly as described in its INSTALLATION MANUAL.

At completed configuration, please click on "OK" in order to save the new project. The project will now appear in the list of the created projects.

If no KNXCONTROL device is found during the scanning process, please proceed as described below:

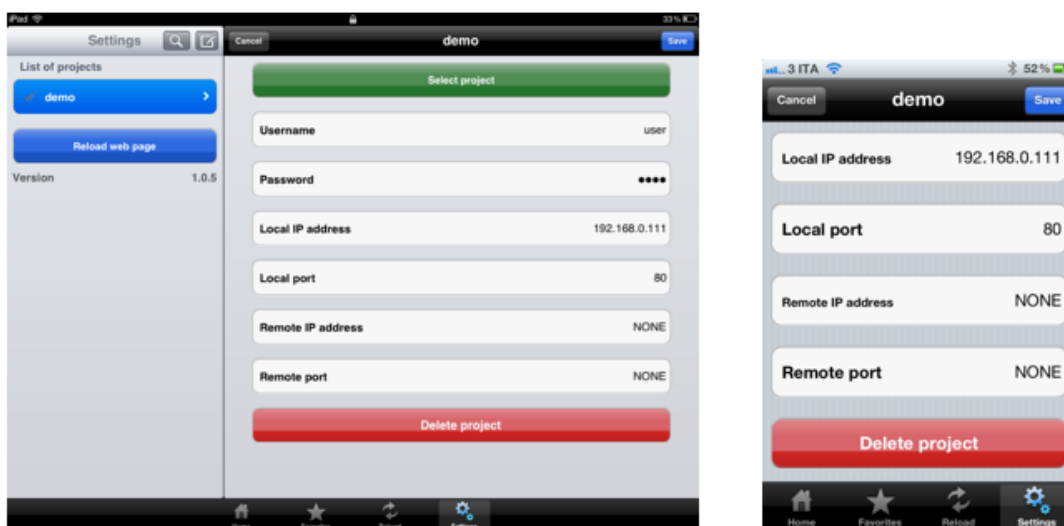
- Hit the NEW button located next to the SEARCH button
- Fill out the required fields in the configuration page, as explained above
- Hit "OK" in order to confirm

From now on the new project is ready to be used; please check out chapter 3 to gather information regarding the usage of DIVUS iOPTIMA.

2.4 DELETE PROJECTS

If you want to remove a previously created project, please follow the steps below:

- Select the “SETTINGS” menu from the TOOLBAR of DIVUS IOPTIMA
- Click on the project that you want to delete
- Hit the EDIT button in the upper right corner
- If necessary, scroll down and hit the red button “DELETE PROJECT”



2.5 SELECT PROJECT AS DEFAULT

If you have configured more than one project and want to select the default project (which is started as soon as the app is launched), please follow the steps below:

- Select the “SETTINGS” menu from the TOOLBAR of DIVUS IOPTIMA
- Click on the project that you want to select as default
- Hit the EDIT button in the upper right corner
- Click on the green button “SELECT PROJECT”

The new selected entry will be highlighted within the projects list; from now on it is possible to use the project for accessing the KNXCONTROL device.

2.6 USAGE IN COMBINATION WITH THE KNX-CONTROL PDK

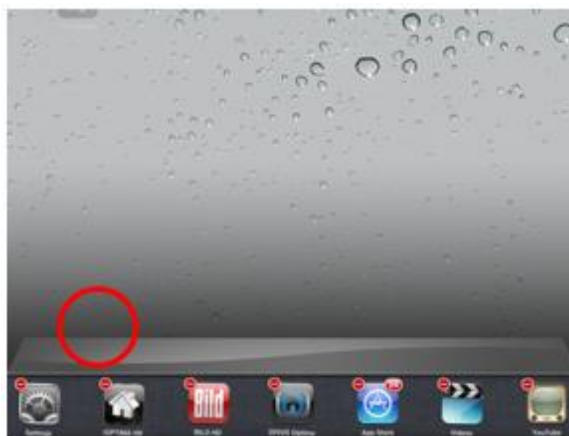
The app DIVUS IOPTIMA can also be used in combination with the KNXCONTROL PDK, the useful development tool (available on the DIVUS homepage, www.divus.eu).

- In order to configure DIVUS IOPTIMA to work with the PDK, please proceed as follows:
- Select the "SETTINGS" menu from the TOOLBAR of DIVUS IOPTIMA
- Hit the NEW button in order to manually create a new project, as already described before
- Insert a name for the project and a set of user credentials valid for the project present in the PDK
- As local IP address, please specify the address of the PC on which the PDK is installed and running
- Insert "8080" as local port

At completed configuration the project can be used just like a "real" project. Naturally, the PDK project can't send any commands on the bus or control real KNX devices, but it can be perfectly used for presentation and training purposes and to get familiar with the functionalities of the KNXCONTROL products.

2.7 EMPTY CACHE

Under some circumstances it can be useful to delete the cache of the app (e.g. when changing the THEME of the visualisation). To achieve this, simply remove the app from the running applications and start it again.



3 Usage

DIVUS iOPTIMA permits to navigate within the visualisation of the KNXCONTROL device in a much faster and easier way than using a common browser (e.g.: SAFARI).

Once a project has been created, as described before, you can access the visualisation by hitting the HOME button within the TOOLBAR of DIVUS iOPTIMA. The following loading screen will be shown:



When the app finishes loading, depending on the configuration of your device, a login window can be shown. Please use a valid credentials set to login to the visualisation. Afterwards, the HOME screen of the KNXCONTROL device will be shown in the same way as when accessing through a common desktop PC:



Compared to a common browser, DIVUS iOPTIMA has the following advantages:

- Quick access buttons in the TOOLBAR (HOME, favorites, refresh, settings)
- The app stores the current page when brought into background; in this way, when the application is started again, it will automatically jump to the page lastly shown.
- Optimized graphics and performance, in order to use at best the possibilities of your Apple device: the navigation experience is nearly at the height of a native app, although being completely based on web contents!

For further information on the general usage of the KNXCONTROL devices, please refer to their USER MANUAL.

