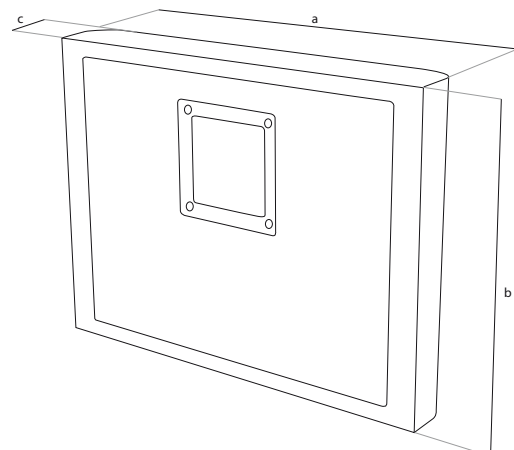


TECHNICAL DATA

| DIVUS STEEL | |
|----------------------------|---|
| Product Type | Embedded Stainless Steel Integrale PC - IP 65 all around |
| General characteristics | |
| Processor | Intel® Celeron N2930 SoC, 1.83GHz - 2.16GHz burst, Quad-Core -- FANLESS |
| Chipset | ISoC |
| Memory | 2GB-8GB DDR3L-1333 SDRAM SO-DIMM |
| Expansion slots | N/A |
| Operating systems | Windows Embedded Standard 7 Windows 10 IoT Windows 7 |
| Power Supply | 90 - 260 VAC fanless |
| | 10 - 36 VDC fanless optional |
| Power consumption | 30 W with 15" LED Monitor |
| Guarantee | 24 Months ¹ |
| Drives | |
| Mass Memory | Flash Memory SLC or MLC various sizes |
| Additional Drives | - |
| Interfaces | |
| LAN/Ethernet | 2 x Realtek RTL8111G Gigabit LAN (2 x on VESA connection, optional 1 x IP65 RJ45 externally accessible on bottom; code S-RJ45) |
| USB | 2 x USB 2.0 ports (2 x on VESA connection, optional 1 USB 2.0 IP65 externally accessible on bottom; code: S-USB) |
| Serial Interface | 4 x Serial port headers (int) (3 x RS232, 1 x RS232/422/485) |
| Keyboard/Mouse | optional Keyboard system with touchpad optional with RFID see additional Datasheet DIVUS STEEL Keyboard System |
| Video | Intel® HD Graphics 313-854MHz |
| Multimedia | Realtek ALC662 HD Audio (line out on VESA connection) |
| Power Button | 1 external power button on bottom side |
| Watchdog Functions | |
| CPU Temperature | Surveillance on board |
| Ambient Conditions | |
| Vibration resistance | 15G |
| Shock resistance | 50G |
| EMC | EN 55011, 55022, 500081 |
| Temperature | +5°C to +45°C max. |
| Relative humidity | 5% to 80% at 25°C (no humidity/condense) |
| Authorization | CE |
| Mechanical Characteristics | |
| PC Unit | Stainless steel V2A |



| Front Unit | | |
|---|--|-------------|
| Display diagonal size | 38,1 cm 15" LED backlight | 48,3 cm 19" |
| Resolution | 1024x768 | 1280x1024 |
| Luminosity [cd/m²] | 350 | 300 |
| Contrast Ratio | 550:1 | 800:1 |
| MTBF backlight [h] | 50.000 | |
| Input | Resistive Touchscreen, 6-wire technology | |
| Touchcontroller | USB | |
| Rating | IP65 all around according EN 60529 | |
| Mounting | | |
| - by default DIVUS STEEL meets VESA 100 Standard - Type: MIS-D 100 - Distance between screw centers: 100 mm x 100 mm - Screws needed: M4 | | |
| Dimensions [mm] | | |
| a: | 440 | 530 |
| b: | 330 | 424 |
| c: | 65 | 76 |
| Weight | ca.10kg | ca. 13 kg |



¹ warranty ex works, normally 24 months, fixed at order -
All data refer on print date, errors and changes excepted

HIGHLIGHTS

- Stainless steel housing (V2A)
- Meets food plant hygiene standards
- IP65 around
- Interface pass through using VESA 100 connection
- Ultra LOW power requirements
- HIGH performance
- Intel ATOM processor
- Fanless, passive air conduction
- Motionless, no moving parts
- Long life LED backlight Display
- Low mounting depth
- High power efficiency
- High performance
- Intel PRO Chipset
- Dual display architecture
- DUAL Gigabit LAN



DIVUS STEEL CONFIGURATION

MONITOR

| |
|--|
| 38,1 cm 15" TFT Display, 1024x768 Pixel |
| 48,3 cm 19" TFT Display, 1280x1024 Pixel |

PROCESSOR

| |
|---|
| Intel® Celeron N2930 SoC, 1.83GHz - 2.16GHz burst |
|---|

MEMORY

| |
|------|
| 2 GB |
| 4 GB |
| 8 GB |

STORAGE

| |
|---------------------------------------|
| HDD 2.5" min 60 GB |
| Flash Memory SLC 16 GB |
| Flash Memory MLC 32 GB ⁴ |
| Flash Memory MLC >=60 GB ⁴ |

ADDITIONAL MEMORY

| |
|-----------|
| No drives |
|-----------|

POWER

| |
|----------------------------------|
| 110/230 VAC, auto-switch fanless |
| 24 VDC fanless |

FRONT DESIGN

| |
|-------------------------|
| DIVUS |
| customized ¹ |

OPERATING SYSTEM

| |
|--|
| Microsoft WE7E English - min. 8 GB Storage |
| Microsoft WE7P MUI - min. 16 GB Storage |
| Microsoft 10 IoT - min. 60 GB Storage |
| Microsoft Windows 7 Prof. English - min. 60 GB Storage |
| Microsoft Windows 7 Ult. MUI - min. 60 GB Storage |

| | | | | | | | |
|---|---|---|---|---|---|---|---|
| 1 | 2 | 3 | 4 | 5 | 6 | 7 | 8 |
|---|---|---|---|---|---|---|---|

| | | | | | | | |
|---|--|--|--|--|--|--|--|
| 2 | | | | | | | |
| 4 | | | | | | | |

| | | | | | | | |
|--|---|--|--|--|--|--|--|
| | 3 | | | | | | |
|--|---|--|--|--|--|--|--|

| | | | | | | | |
|--|--|---|--|--|--|--|--|
| | | 5 | | | | | |
| | | 6 | | | | | |
| | | 7 | | | | | |

| | | | | | | | |
|--|--|--|---|--|--|--|--|
| | | | 1 | | | | |
| | | | 8 | | | | |
| | | | 9 | | | | |
| | | | X | | | | |

| | | | | | | | |
|--|--|--|--|---|--|--|--|
| | | | | 0 | | | |
|--|--|--|--|---|--|--|--|

| | | | | | | | |
|--|--|--|--|--|---|--|--|
| | | | | | 1 | | |
| | | | | | 2 | | |

| | | | | | | | |
|--|--|--|--|--|--|---|--|
| | | | | | | 0 | |
| | | | | | | 2 | |

| | | | | | | | |
|--|--|--|--|--|--|--|---|
| | | | | | | | T |
| | | | | | | | U |
| | | | | | | | Q |
| | | | | | | | M |
| | | | | | | | O |

YOUR ORDER CODE: D-STEEL

| | | | | | | | |
|---|--|--|--|---|--|--|--|
| 3 | | | | 0 | | | |
|---|--|--|--|---|--|--|--|

NOTES:

- ¹ Frontfoil: min. delivery 50 pcs
- ⁴ SLC Drive on request

